

ENDURING

with our community



community foundation

Oceana County

COMMUNITY FOUNDATION FOR OCEANA COUNTY

FOUNDATION STAFF

Tammy Carey
Chief Executive Officer

Danielle Siegel
Program Officer

Olivia Mussel
AmeriCorps VISTA member

Holli Schlukebir
Intern

BOARD OF TRUSTEES (2020)

Randy Wagner
Chair

Garry McKeen
Vice Chair

Rhonda Greiner
Treasurer

Joan LundBorg
Secretary

Jean Russell
Executive Committee Member

John Grant
Executive Committee Member

Eva Berumen

Kellie Fox

Gerrit Herrygers

Dr. Scott Karaptian

Emma Kirwin

Joe Klimovitz

Sarah Schlukebir

Julie Stivers

Jon VanderPloeg



Oceana County

The Community Foundation for Oceana County is a 501c-3 nonprofit organization designed to help people create a lasting impact. With over 180 funds established since 1989, we work with donors, nonprofits, businesses, leaders, doers and more to make our county a stronger, healthier, more vibrant place to live. By connecting donors with causes personal to them and responding to ever-changing issues, we are all united around common goals of improvement, positive change and equitable access to resources for everyone to thrive.



Tel: (231) 869-3377

Email: tammy@oceanafoundation.org

danielle@oceanafoundation.org

olivia@oceanafoundation.org

Address: P.O. Box 902, 388 S. Hancock St.,
Pentwater, MI 49449

Website: oceanafoundation.org

ANNUAL REPORT TEAM

Project Managers & Writers:

Tammy Carey, Holli Schlukebir, Danielle Siegel, Julie Stivers

Design: *Lisa Payne Kirker – Fresh Graphic Design Inc.*

Photography: *Joe Klimovitz – JHK Media, various contributors*

Copyediting: *Julie Stivers*

Printer: *Dobb Printing*

STARTING

Anew

4-5

ENDURING

a Health Crisis

6-7

EMBRACING

the Outdoors

8-9

ACTIVATING

New Philanthropy

10-11

COMMITTING

to Equity

12-13

GROWING

an Enduring Foundation

14-15

EXPANDING

more Opportunity

16

LETTER *to our donors*

Driving around Oceana Country is a road trip of many views. It may be the very reason you moved here, or back, or why you don't ever want to leave. A frequent sight along our rural roads are barns of all types – still standing the test of time, conditions and foundation. When we reflect on 2020, we acknowledge the difficult test of these times. The test that continues to push us collectively beyond what we thought we could endure. And yet, we find that grit that helps us to celebrate our lives together in the community we cherish. While we may mourn the things, and sadly the people, that we have lost during these times – we have hope and conviction to make plans for our future.

2020 was a new beginning for the Community Foundation for Oceana County. We began the year as an independent community foundation and spent the first quarter transitioning our assets under the direction of a new investment manager at Vanguard, our data onto a new comprehensive software platform and our staff towards operating all aspects of running our organization. Then, we all know what happened. Life got hard and we learned more about enduring the trials that fell before us. And for many, the challenges of these times continue.

In this report, you'll read stories of our response to this health crisis and the expansion of our home life to include more of Oceana's beautiful outdoor assets. We deepened our commitment to put equity at the center of our organization – from how we do our work to how we award grants. Through it all, you were our faithful partners. Your financial support, phone calls, emails, boxes filled with necessities and offers of help made it all happen. While endowments allow a foundation to endure forever, givers are what allow a foundation to truly grow to meet evolving community needs.

With more gratitude than this letter could ever express – thank you for your help in 2020 and always.

Randall Wagner BOARD CHAIR

Tammy Carey CEO



2020

by the numbers...

\$1.02
MILLION
IN GIFTS
\$15.9 MILLION
IN TOTAL ASSETS

854 GIFTS

14% ROI

\$912,188
IN GRANTS &
SCHOLARSHIPS
(\$7.8 MILLION SINCE 1989)

14
NEW FUNDS
(174 TOTAL)

\$285,239

IN GIFTS TOWARDS COMMUNITY PROJECTS

\$40,203

RAISED FOR AREA NONPROFITS
THROUGH CFOC WISH LISTS

44
LEGACY SOCIETY
MEMBERS

232
NEW DONORS
(WOW!)

\$84,000

IN GIFTS RAISED FOR **\$50,000**
YEAR-END CHALLENGE MATCH

TO ADMINISTRATIVE & COMMUNITY INVESTMENT FUNDS

\$84,600

IN CFOC UNRESTRICTED FUND GRANTS

Oceana County
URGENT
NEEDS
Fund

SUPPORTING THOSE
MOST IMPACTED BY THE
COVID-19 PANDEMIC -
SO FAR, AWARDING OVER
\$105,000 IN GRANTS

ECONOMIC DEVELOPMENT
PARTNERING WITH ORGANIZATIONS
SUPPORTING COMMUNITY DEVELOPMENT

**Read early.
Read often.**

DEVELOPING
EARLY LITERACY SKILLS
FOR ALL OCEANA
CHILDREN.

OCEANA
iCAN!

THE OCEANA COLLEGE
ACCESS NETWORK
PREPARING STUDENTS
& ADULTS FOR POST-
SECONDARY EDUCATION



Statement OF FINANCIAL POSITION

for year ended December 31, 2020

BALANCE SHEET

ASSETS	2020
Cash and cash equivalents	\$637,175
Prepaid expenses	\$1,310
Investments	\$15,344,919
Property & Equipment, net	\$9,753
Total Assets	\$15,993,157
LIABILITIES	
Accrued expenses	\$10,883
Funds held as agency funds	\$580,591
Total Liabilities	\$591,474
NET ASSETS	
Total Net Assets	\$15,401,683
Total Liabilities & Net Assets	\$15,993,157

STATEMENT OF ACTIVITIES

REVENUE AND OTHER SUPPORT	2020
Contributions	\$14,623,502
Net investment and other income	\$1,817,717
Total Revenue and other support	\$16,441,219
EXPENSES	
Program services	\$898,233
Operating	\$141,303
Total Expenses	\$1,039,536
CHANGE IN NET ASSETS	\$15,401,683
Net Assets, January 1*	\$ -
Net Assets, December 30	\$15,401,683

Vanguard Institutional Advisory Services, Investment Managers | Kruggel-Lawton, CPA (auditor)

*All assets transferred from the Community Foundation for Muskegon County on 03/02/20

CHALLENGE MATCH

We are excited to announce that two anonymous donors have provided a challenge match until December 31, 2021. We invite you to make a donation to support our Community Investment or Administrative Funds to help us meet our \$50,000 challenge matches. **Your gifts will support greatest needs and provide leadership in Oceana County.**

IRS EXPANDED CHARITABLE TAX BENEFITS FOR 2021

- For non-itemizers, couples filing jointly can claim a deduction of up to \$600 (\$300 for individuals) for cash, check or credit card gifts to nonprofits.
- For itemizers, the law now permits individuals to apply an increased limit, up to 100% of their AGI.
- Corporate limit increased from 10% to 25% of taxable income.

The late 1980s was a time of turbulence worldwide. The Berlin Wall was crumbling, protestors bravely faced tanks in China's Tianenman Square, and the Exxon Valdez oil spill created one of the most serious environmental disasters in history.

But in Oceana County, in the worst part of a rural Michigan winter, a group of dedicated, public-spirited visionaries came together during the blizzard of 1988 to meet in the basement of a local bank in Hart and discuss how to help with very local issues and problems. This group had a great idea -- establish a community foundation.

More than 30 community volunteers had been tossing the idea around, spurred by a dream of Walkerville retired educator Julia Hager. A teacher and world traveler, she offered a substantial gift to establish a scholarship fund for students of Oceana County, where her family were pioneers and had lived for generations. Upon her death several years later, the Hager-Lacey Memorial Scholarship Fund became a bedrock for the foundation, offering four-year scholarships to graduating high school seniors from each Oceana County high school.

The wintry meeting brought some of these community leaders together with representatives from the Council of Michigan Foundations and the Community Foundation for Muskegon County. They discussed key social issues in Oceana County and determined how a foundation might be formed. They came up with a novel solution.

The concept of expanding the reach of established foundations into wider geographic service areas, especially rural areas not served by a foundation, was being discussed across the country. In the fall of 1988, an agreement was reached with the Muskegon Community Foundation. The Oceana County Community Foundation (OCCF) became the first Affiliate Foundation in the U.S.

On January 10, 1989, the first meeting of the OCCF Board of Trustees was held, led by President Jay Burrows, and the first scholarship fund was invested.

The timing was fortuitous for another early milestone in OCCF history. In 1990, the Foundation became part of a new program to involve young people in philanthropy. Administered by the Council of Michigan Foundations and a challenge match program by the W.K. Kellogg Foundation, youth

endowments were formed, managed by Youth Advisory Committees (YAC). OCCF met the initial \$25,000 challenge match requirement to establish the program, and in a few short years area donors stepped up to the challenge eight times, raising nearly a half-million dollars. As a result, the YAC board of Oceana high-schoolers advise on all youth grants, perform service projects and gain leadership skills.

The next decade for OCCF was one of growth and expansion. Other key scholarships came on board -- Hart & Shelby Public Schools established funds, along with both local Rotary Clubs. In 1994, another phase of grantmaking was established with the first donor advised fund, the H. Edward & Dolores Bauer Fund. And in 1996, the Bessie E. & Dr. Ethan Allen Gray Health Fund was started with a large bequest. That fall, November 1996, the Foundation hired its first paid staff member, Kay Vrbanac.

To close out the decade, and the millennium, in 1999 the Foundation rebranded its name as part of a statewide initiative to the Community Foundation for Oceana County (CFOC).

Tammy Carey became the Executive Director in July of 2002. The impact of CFOC's grantmaking was becoming significant in the county, and participation by the donor community was stepping up. In 2004, a group of generous residents of the Little Pt. Sable Association organized the first of a series of annual benefit concerts to establish an Arts Fund for the Foundation.

In April of 2005, the largest gift to date was received, a \$2.4 million bequest from Bob Diman to the Hart Public Schools Foundation Fund. The following year the Foundation reached the milestone of \$1 million in cumulative grants.

In 2007, CFOC moved into an office at Shelby State Bank in Shelby. In 2008, the Legacy Society was established, recognizing donors who were planning a future gift. And in 2011, a historic Match Day event was held raising \$320,000 in one day for area nonprofits!

CFOC began serving yet another role in the philanthropic life of the county in 2013, when it became the fiduciary agent for several campaign funds. The Foundation helped area organizations by managing the funds they were raising for capital projects, including the Harbor House in Hart, the Hart-Montague Trail Reconstruction project, and a new facility for the Oceana County Council on Aging. (continued on page 09)



The Foundation's 30th Anniversary was an amazing celebration of Oceana's growth over the past couple of decades! Hosted at the West Michigan Research Station, over 100 guests spent the evening enjoying fellowship, picnic boxes and special announcements. Retiring trustees, Gerrit Herrygers and Garry McKeen, shared their reflections of the Foundation's growth & accomplishments and announced their selections for special recognition grants of \$1,000. Founding Trustee Paul Erickson reminisced over the early days & unique organization start - as the first affiliate foundation in Michigan. Upon those founding trustees' shoulders, we stand tall 30 years later.

We had the pleasure to award 2020 and 2021 Greater Good Awards to Shelby State Bank and Peterson Farms, Inc.



The purpose of the award is to recognize an individual, couple, or group that has created a large-scale community impact through their time, talent, and treasure. Now, we add businesses to that list of those we recognize as creating significant impact. Both Shelby State Bank and Peterson Farms, who also have charitable funds with the Foundation, continue to make investments into helping our community, and its residents, with compassion, care & understanding. We are thrilled to partner with you and work together to help Oceana grow and prosper!



Enduring

HEALTH CHALLENGES DURING THE PANDEMIC

While the Covid pandemic has affected every aspect of life world-wide, perhaps no other field has felt its impact more dramatically than health care. The resources of physical and mental health professionals and institutions have been stretched to the maximum, and the long-simmering problems of vulnerable and underserved populations have been propelled to the forefront of philanthropic investment. In many ways, the pandemic has inspired new initiatives to impact the mental and physical well-being of the residents of Oceana County.

The availability of high-quality healthcare within Oceana County is a crucial step in developing equitable and long-term wellness for area residents – a goal shared by the Foundation and the Mercy Health Lakeshore Campus in Shelby.

The Lakeshore Community Hospital Endowment Fund, established in 1993 at the Foundation, has provided over \$65,000 in funding over the last 5 years towards the hospital's growth goals. "The Fund allows reflexive action to patients' needs, as we receive the capital necessary to invest in essential equipment, staff development, and community programs," said Vice President of Operations, John Foss. "We are able to purchase state-of-the-art equipment as needed, freeing up the hospital's budget to other

investments." The hospital's successful efforts, with the support of local donors, have contributed to its rapid rise in the Charis Center's list of Top 100 Rural & Community Hospitals.

A good example of a project undertaken well before the pandemic, but proving particularly meaningful in the overwhelming stress of these times, is a new Reflection Room in the hospital's waiting room area. In 2016, the hospital accessed \$30,000 from its endowment fund to construct a calming environment, a non-denominational room filled with stained glass and wooden pews, that is inviting for all staff, patients, and families to rest for a moment, to take a breath to recenter their focus. The Reflection Room became a critical part of supporting staff mental health while working the frontlines of the COVID-19 pandemic.

The Lakeshore Campus purchased an Advance Life Support (ALS) defibrillator in 2019 with \$12,000 in grant funds from the Foundation. It is the next step in treatment after a standard defibrillator does not work for cardiac patients during heart attacks. An ALS defibrillator is a life-saving device that offers further intervention in addressing sudden cardiac emergencies, a common – and sometimes fatal – occurrence.



More recent equipment purchases have included a bladder scanner, a wheelchair, and a Medfusion Syringe Pump. An anonymous donor advisor provided further funding to support the purchase of multiple Stryker stretchers. The new stretchers replace older models and are easier and safer for staff to maneuver and significantly improve patient comfort. They also have built-in scales that allow staff to directly weigh patients.

The pandemic crisis emphasized the need for accessible healthcare in Oceana County, a long-term need addressed by the Lakeshore Campus particularly in regard to two prominent medical gaps: the limited availability of both primary and specialty care. One solution is to add more physicians to the Mercy Health system by recruiting primary care staff members interested in making Oceana County their home. New opportunities for specialty care have become apparent with investments by the Campus in telehealth technology, allowing patients to visit the local hospital for private sessions with physicians in Muskegon and Grand Rapids, which also addresses problems with limited access to transportation and reliable internet.





CONNECTION POINT'S ENDURING EFFECTS

For individuals facing chemical dependency, the world can be an isolating place. Connexion Point Inc. integrates chemically dependent individuals back into their life through safe and confidential treatment coupled with individual and group therapy. They recognize that addiction is larger than a single individual; it affects families, employers, and communities. They work to walk alongside their clients in recovery. Connexion Point received a \$2,400 grant from the Bessie E. & Ethan Allen Gray Health Fund to help inmates of the Oceana County Jail participate in their program upon release. The grant included support for program fees and transportation costs at a time when employment opportunities for many participants had been interrupted by Covid. Agency staff shared that gap funding was crucial to the success of the program. Required attendance at weekly meetings necessitated transportation support, especially for Oceana clients. "We want to keep them away from their triggers, and these meetings help them," explained agency staff. Without the Foundation support, participants would be lost.

During the unprecedented difficulties of 2020, the grant helped seven Oceana clients stay active in their recovery program. Some of those individuals shared their story as part of a new and effective Foundation reporting process that encourages direct feedback from grant recipients. A father and son, both program participants, have remained dedicated to the program for over five years and therefore dedicated to their sobriety, their work, and their family. The family would not be here, together, without Connexion Point and their funding partners.



MIGRANT CHILD TASK FORCE

Enduring Commitment

During the growing and harvest seasons, Oceana County becomes a temporary home for hundreds of farmworkers who help plant, cultivate and hand-harvest local crops. They help area farmers grow and gather asparagus, peaches, apples, and more, a benefit to the entire county. The Michigan Migrant Child Task Force partners with local organizations to support migrant families each summer during their stays. As a Department of Health and Human Services (DHHS) program, they operate a Migrant Camp Outreach project to connect farmworkers and their families with much-needed items, ranging from hygiene supplies such as toothbrushes and soap to toys like soccer balls and crayons.

In 2021, the Migrant Child Task Force and the Community Foundation came together to support Migrant families. A donation box placed in the Shelby State Bank lobby in Pentwater; along with an Amazon wish list promoted on social media encouraged area donors to drop off toys, infant care items, blankets, and personal care items. It was a collaborative effort, aided by Oceana residents who donated and shared information on the project with their family and friends. Foundation and DHHS staff delivered these needed resources to the camps, which also was a great opportunity to provide these essential workers with a community welcome and thank them for their efforts. "We are grateful for our migrant farmworkers and desire to overcome any sense of them being an invisible population in Oceana County. This spirit was shared by so many who eagerly gathered & donated towards this collection effort," said Foundation CEO Tammy Carey.

BESSIE E. & ETHAN ALLEN GRAY HEALTH FUND

In 1974, the estate of Bessie E. Gray named the Oceana Hospital in Hart as a recipient of her \$200,000 trust, in memory of her husband, Dr. Ethan Allen Gray. When the Oceana Hospital closed in 1993 the Trust was transferred to the Foundation to establish the Bessie E. & Ethan Allen Gray Health Fund. The annual grant distribution from the Fund is split between the Lakeshore Community Hospital Endowment Fund and the Foundation to support health-focused grant requests. The Gray Fund has significantly contributed to the growth over time of the Lakeshore Hospital Endowment Fund.

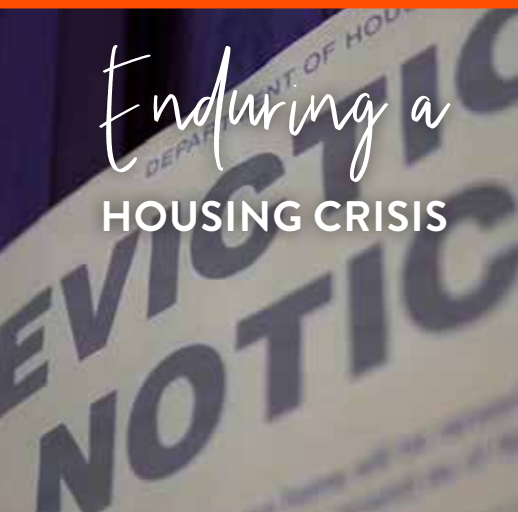
Dr. Gray graduated from Rush Medical College in 1887 and after postgraduate work in Berlin and Vienna, he became interested in the treatment of tuberculosis. He was one of the founders of the Chicago Fresh Air Hospital and was its medical director from 1909 until his retirement in 1935. From 1916-24 he was also an Assistant Professor of Medicine at Northwestern University Medical School. Dr. Gray married Bessie, a nurse, in 1928 and they moved to Pentwater in the early '30s. Bessie was active in many community organizations, and both held the Oceana Hospital in high regard. At the time of the trust gift, the Hospital designated a coronary and intensive care unit in recognition of the Grays.



Enduring a HOUSING CRISIS

While housing insecurity is a persistent problem throughout Oceana County, the pandemic transformed homelessness from a possibility to a threat for many residents. Housing searches can hide unforeseen costs that prevent a household from finding long-term, affordable housing. Some of these costs include transportation, security deposits, existing debt, and application fees. Since 2019, TrueNorth Community Services has connected low-income families in Oceana County with the resources necessary to address their housing needs. These services include eviction protection and helping households on the brink of homelessness.

With increased needs triggered during the COVID-19 stay-home mandate, TrueNorth was awarded over \$9,250 in several grants from the Foundation's Homelessness Prevention Fund and the Urgent Needs Fund. These grants supported gaps in TrueNorth's funding from state and federal agencies and allowed them to focus on a population generally outside their clientele: individuals above the Federal Poverty Level, but who struggle to meet their household's daily needs. TrueNorth helped prevent evictions or helped clients find new, affordable rental housing.



Placemaking IN OCEANA COUNTY

During the pandemic, the need for outdoor spaces became pronounced as Oceana residents explored nature as a safe getaway.



This great need also highlighted the variance in infrastructure across the County, with some areas lacking amenities or the staff capacity to advocate and apply for needed items. The Foundation is proud to announce the results of its first-ever placemaking grant round to underserved local communities. With a total grant award of \$15,000 from the Urgent Needs Fund and an additional \$3,000 from the Lake-Osceola State Bank Advised Fund, Walkerville, Ferry, and Rothbury will undertake small-scale, do-able projects in their community parks. Oceana County Parks & Rec was also invited to apply to add needed items across all county parks. Placemaking involves looking at, listening to, and asking questions of the people who live, work and play in a particular space, to discover needs and aspirations.

With a grant of nearly \$4,000, Walkerville will upgrade its Village Park by adding new games and restoring its tables and benches. Ferry, Rothbury, and the Oceana Parks & Rec each received awards of \$4,680. Ferry is investing in adding outdoor games & other family fun to its Community Center, while Rothbury will add a shelter to Czarny Softball Field. New accessible grills will be added to all Oceana County Parks with their grant award.

While outdoor spaces are not equally distributed throughout the area, investing in Oceana's underserved areas is the first step in creating a more vibrant, equitable future for all. The placemaking grants will add outdoor community amenities to the eastern portion of our county while supporting



overall community development. **We will be as excited as you to see the final results come next spring.**



OCEANA CONTINUES TO DISCOVER

Otto Nature Preserve

Nestled in the hills of Benona Township, Otto Nature Preserve is a hidden treasure. As a large 80-acre park open to the public, it offers Oceana residents a place to reconnect with nature. The preserve is managed by the Oceana Conservation District, following the property gift by Richard & Lorayne Otto. Part of the Conservation District's development plan was to add interpretive signs in several locations to enhance visitors' experience. They received a \$3,000 grant from the Foundation, supported by the Eugene Kuhne Fund, the Parks and Trails Fund, and the Foundation's Community Investment Fund.



Planting Roots AT THE WEST MICHIGAN RESEARCH STATION



The West Michigan Research Station opened in August 2021. In addition to housing crucial agricultural research, the Research Station is a community space for nonprofits, schools, and businesses to learn and connect. The Station received multiple grants from the Sparks/Ryan Memorial Fund to construct a gazebo and support landscaping needs. An additional grant from the Zack Snider Agricultural Memorial Fund helped to support a building to display historic tractors. Both projects proudly celebrate Oceana's agricultural origins and enhance the Station board's vision of creating an inviting outdoor gathering space for the community.





Knee-High Naturalists

KNEE-HIGH NATURALISTS FOREST SCHOOL

The Oceana Conservation District offers a nature-based preschool program to Oceana's youngest learners. The Knee-High Naturalists Forest School provides children, ages 3 to 5 years old, with a hands-on learning opportunity to enjoy nature. The program allows kids to experience a wide variety of school readiness activities, including painting, reading aloud, and exploring Oceana's forests. The Conservation District received a \$5,000 grant to make infrastructure improvement to Doolittle Park and to acquire educational materials for the Forest School. The new program was so popular when shared with our donor advisors that it was funded by a team of Foundation funds: the Oceana Youth Fund, Elaine and Lee Curtis Fund, Ordoobadi Family Fund, Eugene Kuhne Fund, and the Community Investment Fund.

NORTH-END PARK IN PENTWATER ADDS HANDICAP-ACCESSIBLE PLAY AREA

The Village of Pentwater's Recreation Program was awarded \$3,000 from the Gray Health & Youth Funds to help renovate the North End Park. The Village resurfaced its tennis and basketball courts and added workout equipment and a pickleball court.

Of special interest to the Foundation was the addition of handicapped-accessible equipment to the children's play area to create encouraging and learning opportunities for children of all ages and abilities. A drum circle is designated for wheelchair accessibility and includes avenues of touch, sound, and visual stimulation. Future upgrades being considered include accessible swings, children's nature discovery tables and raised discovery sandboxes. Accessible pathways throughout the park, a pavilion and picnic area are also in the works for the future.

For residents and visitors to Pentwater alike, the expanded North End Park will be a great destination for picnics, gatherings, and exercise for those looking for an afternoon out of the house! The Village hopes the park will encourage a healthier lifestyle across Pentwater, as people enjoy the park's variety of outdoor activities.



STARTING THE COMMUNITY FOUNDATION

(continued from page 05)

As CFOC approached its 25th anniversary, the organization branched out to encompass its own community leadership initiative. In 2015, a coordinator was hired to administer the Oceana College Access Network (OCAN!), helping to ensure all students, including adult learners, are prepared for and have access to post-secondary education and training. Later that year, the Oceana Employer Resource Network was started, placing a workforce success coach in area businesses. In 2016, CFOC was able to establish a Read early. Read often. program to encourage early literacy by hiring its first AmeriCorps/VISTA member.

The little rural Foundation was beginning to attract attention from state and national agencies looking for program partners. CFOC was selected to join the Michigan Community Leadership Network in 2015, and in 2018 for

the Michigan Rural Economic Development Cohort. The results of this recognition led to a variety of programs impacting area communities from Shelby to Pentwater to Hesperia.

It was becoming clear that the Community Foundation for Oceana County was ready to stand on its own. In 2018, a three-year strategic plan was developed, and as part of that plan CFOC became an independent and separate non-profit organization on January 1, 2020. Offices were moved to a larger space at Shelby State Bank in Pentwater, and additional staff was hired.

For almost every person on earth, 2020 was a year of challenge and crisis. CFOC worked with area nonprofits to identify and understand local community needs, and local donors dug deep in their pockets to make sure Oceana could take care of its own. In late March, an Urgent Needs Fund was up and running to provide support to area nonprofit organizations, schools and

governments on the front lines serving those most impacted by the COVID-19 pandemic.

As this history is being written, the challenges are not over. We were thrilled to be able to gather -- finally -- on September 20, 2021 for the celebration of our 30th anniversary, planned for the summer of 2020 (more about that festive and joyous event can be found in the sidebars on these pages). However, as we come together, masked and vaccinated, it is clear that the challenges of Covid will continue. Whatever the outcome, CFOC and its donor community will be there to help -- in this challenge, the next, the one after that, and the one after that...

**WE
ENDURE.**



PARTNERS IN *Philanthropy*

Creating an Advised Fund takes \$5,000, or the fund minimum can be built up over a period of 5 years, with a starting gift of \$1,000. The Foundation keeps partners in the loop about emerging opportunities, critical needs and what's happening in the community. Annually in the fall, we also survey nonprofits to collate their needs into a community wish list. We also share a grant catalog from our twice annual community grant rounds with our donor partners. Many advisor partners enjoy meeting those wishes & grant requests from their Funds. By pooling resources, the Foundation was able to raise our twice-yearly community grant cap up to \$5,000 and allow our nonprofit partners to submit unique proposals in both grant rounds – significantly increasing impact.

Investing in Oceana's Outdoor Spaces

The Oceana County Parks and Recreation Commission received \$3,000 to purchase new picnic tables for Cedar Point and Doolittle County Parks. This grant award was supported by the Wilson Family LPS, Oceana Parks & Trails and the William R Lathers Golden Township Funds. Picnic tables at Cedar Point Park will sit atop a newly built accessible viewing deck overlooking Lake Michigan, while tables at Doolittle Park will outfit a new pavilion for community use and Oceana Conservation District's student programs. Tables will provide visitors with a space to relax and enjoy the beauty of our area, while also allowing for an increased variety of activities.



Furnishing a Home for Love Inc.

In 2020, Love Inc. expanded its organization and purchased a permanent office space in downtown Shelby. The new space, across from their thrift stores, will house their administrative and client intake offices. To help establish their new location as the home of their operations, Love Inc. received a \$3,250 anonymous grant award to furnish their office and another \$1,000 grant from the Henry & Dorothy V. Fischer Family Fund to restore a sidewalk and landscaping at the back of their building. This new office building provides much-needed privacy to handle the increasing number of neighbors Love, Inc. is serving.



Oceana Christian School's Therapy Dog, Cassie

Oceana Christian School is excited to welcome Cassie, a golden doodle puppy, to their staff! Cassie will offer emotional, social, and physical support to the school's 100 elementary and middle-school students. While already a fixture in the school's office, Cassie needed the training necessary to be a full-time student therapy dog. Oceana Christian Schools received a \$2,000 grant from the Youth Fund to fund Cassie's training and certification. The Youth Fund is advised by the Youth Advisory Council, a countywide organization of high-school students. Each year, these students help distribute over \$30,000 in grants to student-oriented programs, like Cassie!

Walkerville Thrives Fitness Classes

During the pandemic, Walkerville Thrives wanted to connect residents with virtual fitness classes. They received \$450 in grant support from the Lake-Osceola State Bank Fund, allowing them to purchase a television, a DVD player, and an audio voice amplifier. Walkerville Thrives plans to host virtual and in-person classes at the Old School Recreation Center, with the fitness center now housed in the old elementary school cafeteria. Their fitness classes will provide residents with a safe, fun, and community-based approach to reaching their fitness goals. Prior grants from the Bessie & Ethan Allen Gray Health and Community Investment Funds supported fitness equipment, painting and new flooring needs. Walkerville Thrives hopes to further invest in Walkerville's long-term health with in-person classes and will continue to outfit a fitness space to meet resident needs.



Volunteers are busy converting the old elementary school cafeteria into a fitness center.

Investing in the Little Point Sable Lighthouse

As a symbol of Oceana County, the Little Point Sable Lighthouse has stood tall along the lakeshore since its construction in 1874. The Sable Point Lighthouse Keepers Association received \$3,200 in combined grants to complete needed repairs last summer. Funded by the Nobles Family and the Richard and Ryan Walsworth Memorial Funds, the repair project included the restoration of the Lighthouse's windows, with new frames and reglazing the glass panels. Another grant from the William R Lathers Golden Township Fund helped to support needed painting in the tower's interior. By investing in the Lighthouse today, the Keepers Association can continue to invite thousands of visitors to enjoy the beauty and permanence of this historic beacon.



Hesperia Community Schools Book Vending Machine

When brainstorming how to connect students with books, Hesperia Community Schools learned about book vending machines. Like other vending machines, students would 'purchase' their books with tokens provided by the school. Students can choose from chapter books, picture books, graphic novels, and more! They earn tokens by reaching academic goals, showing emotional growth, or even on their birthdays. This spring, Hesperia Community Schools received \$5,000 from Mrs. Mullen's Closet Fund and the Mary Ann Peterson "Grandma Pete" Fund to fully fund the new vending machine. Hesperia Community Schools is excited to launch this innovative resource in the 2021-22 school year!



The Village of Shelby's Pocket Park

The Village of Shelby's Community Development Fellow, Emily Stuhldreher, spearheaded the vision of creating a pocket park amongst the downtown business corridor. From an overgrown empty lot between buildings, a new entry point from the nearby Hart-Montague Trail to the downtown is forming. Over \$11,000 in grants were awarded from the Community Investment, Shelby Rotary Club, Dr. James R Hines and Sparks/Ryan Funds to support property acquisition, benches, tables, shade structure, water fountain and wayfinding signage. The Village is matching these community investments by supporting property, infrastructure and utility needs. By transforming a vacant, unkempt lot into a beautiful green space, the Shelby Pocket Park offers residents a new area to enjoy.

Stony Lake Therapeutic Riding Center

Since 2016, Stony Lake Therapeutic Riding Center has connected individuals with equine therapy. As an innovative form of treatment, the Riding Center provides progressive equine therapy to serve, encourage and promote growth in individuals with physical, mental, social, and emotional challenges. The Riding Center received a \$9,000 combined grant from the Oceana Youth, JT Sackett, and Henry & Dorothy V. Fischer Family Funds. The grant helped purchase a transfer lift to make equine therapy more accessible to individuals in wheelchairs, in addition to subsidizing the instructional cost for several Oceana families. Stony Lake Therapeutic Riding Center proudly serves over 20 clients at this time and continues to grow with the help of our community's support.



More than a Baby Pantry

In 2019, Trinity Lutheran Community Church (TLC) envisioned expanding their food pantry's impact by adding a baby pantry. With the help of the Bessie E. & Ethan Allen Gray Health Fund, the new pantry provides families with free diapers, wipes, formula, equipment and more. Soon added was a family reading room, supported by the Oceana Youth Fund, Read early. Read often., and Mary Ann Peterson "Grandma Pete" Memorial Fund, which serves as a space for volunteers to read to children, provide free books for families and discuss the importance of early literacy. Mrs. Mullen's Closet Fund soon filled a need for clothing requests. In August 2021, TLC, Read early. Read often, and Great Start Collaborative partnered to expand their annual Backpack Blowout Event. The event provided attendees with school supplies, books, and activities while providing 80 families with a free crockpot, recipe book, and cooking kit. The Church's innovative approach to empowering families is making a difference in Oceana.



Arbre Farms' Daycare Center

A consistent barrier for rural families is accessible and affordable childcare. Local businesses struggle to hire and retain employees in a childcare desert. Arbre Farms hopes to establish its childcare center for employees, having received a \$3,000 grant award from the Oceana Youth Fund. With the grant, United Way of the Lakeshore-Oceana facilitated the hiring of a consultant to help with Center provider licensing and start-up equipment needs. Providing families with safe, affordable childcare creates an avenue for parents to rejoin the workforce.



EDUCATION

THE PATHWAY FOR OUR FUTURE

ARIANA BORREGO FUTURE NURSE

"I am beyond thankful for the opportunity to seek higher education with your help," shares Ariana Borrego, a 2021 recipient of the Richard and Carole Tompkins Scholarship and graduate of Hart High School. Ariana has worked diligently to prepare for her future in healthcare. She has taken Allied Health classes at West Shore Community College and is studying nursing at Central Michigan University.

The Richard and Carole Tompkins Scholarship is awarded to students attending Michigan State University or Central Michigan University. Both Richard and Carole were deeply invested in Hart, and their scholarship helps propel students into higher education.

RIGOBERTO RANGEL JR. FUTURE BUSINESS OWNER

"I shall follow in the Rotary Club's footsteps by continuing to lead my community towards a greater future," said Rigoberto Rangel Jr., a graduate of Hart High School and 2021 recipient of the Hart Rotary Club Scholarship and the new Clarence Metzler Memorial Hart Band Scholarship. Rigoberto dreams about becoming an entrepreneur with a positive impact on the world around him. He is attending the University of Michigan.

The Hart Rotary Club Scholarship selects students that reflect Rotary International's motto "Service Above Self." The Clarence Metzler Scholarship recognizes band participants and encourages students to continue in the same kind, dedicated spirit as Mr. Metzler.

ANTONIO GONZALEZ FUTURE MENTAL HEALTH SOCIAL WORKER

"I am so thankful that you chose me as one of the students to honor everything this scholarship represents," explained Antonio Gonzalez, one of the first recipients of the Christopher Schaner Memorial Scholarship. He hopes to help others through hard times and is attending Grand Valley State University. Antonio is a graduate of Hart High School.

Christopher was a seventeen-year-old Hart High School senior. Christopher was loved by many, especially his mother, Jessica, and his sister, Haleigh. They are both passionate advocates of mental health awareness and suicide prevention and created this fund to encourage students to discuss the impact of mental health in their lives.

ABIGAIL JIMISON FUTURE ACTRESS

"Carla Morat taught me no matter what is said to me, that I must come out stronger than I once was before," Abigail Jimison, a 2021 renewal recipient of the Kirk Music and Education Scholarship, is a 2nd year student at Western Kentucky University. With a passion for theatre and a talent for acting, Abigail left her mark on Shelby High School.

The Kirk Music and Education Scholarship is designed to foster the creative interests of area students. It was established by Kathy Fox in memory of her parents, John and Gladys Kirk. The Kirk family is known for their legacy of education and music, helping artists share their talents with their community

JOEL MEAD FUTURE AUTO TECHNICIAN

"Thank you for the opportunity to continue my dream in mechanics and welding," Joel Mead shared. He is a graduate of Hart High School and a recipient of the Jordan Evans Memorial and the Joseph P. Warmbier Scholarships. Joel is the Foundation's first recipient to pursue an apprenticeship and used his scholarships to acquire needed tools and welding gear. He is an automotive tech apprentice at Affordable Auto in Shelby.

Both Jordan Evans and Joseph Warmbier entered the workforce after high school and contributed to their communities on the family farm and with a plastering business. These scholarships are awarded to Hart graduates pursuing skilled careers.

JONATHAN VANDUINEN FUTURE PROFESSIONAL MUSICIAN

"From picking up the guitar at age 6, to getting involved in musical activities in my community, I've been moving towards my lifelong goal of becoming a professional musician," explained Jonathon VanDuinen, a recipient of the Barry Ross Scholarship of the Little Points Sable Arts for Oceana Fund and Pentwater Public Schools Scholarship. Jonathon participated in the WSCC's Jazz Band and Wind Ensemble, worship groups, and will be continuing his musical studies at the University of Michigan.

Dr. Barry Ross was the former Assistant Conductor of the Kalamazoo Symphony - a light within West Michigan's musical community and the annual Arts Concert at Little Point Sable Church. This scholarship continues to share his love of music with area students to pursue their career dreams.



ARIANA BORREGO



RIGOBERTO RANGEL JR.



ANTONIO GONZALEZ



ABIGAIL JIMISON



JOEL MEAD



JONATHAN VANDUINEN

ADULT SCHOLARSHIPS

The Foundation's Adult Student Scholarship is designed to help Oceana adult learners trying to earn those long hoped for degrees and credentials. Currently, these scholarships are focused on students within the Futures for Frontliners and Michigan ReConnect Programs, which award tuition to frontline workers and adults over 25, respectively. These programs provide free in-district tuition, which leave Oceana County students (who are out of district) with a portion of the cost to pay out of pocket. That is where we help.

HALEY FELT FUTURE NURSE

"With my experience in the medical field and my love for patient care, I am prepared to make whatever sacrifices necessary for my education," states Haley Felt. She currently works as a Certified Nursing Assistant at Mercy Health Lakeshore Campus and is attending Muskegon Community College to earn her nursing degree, as part of the Futures for Frontliners program.



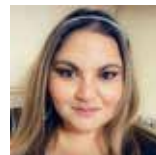
BRANDY FACUNDO FUTURE PHYSICAL THERAPY ASSISTANT

"Growing up, college was never something that was really encouraged. Now, as a first-generation college student, I am ready to pursue my dreams," explained Brandy Facundo. Brandy wants a better future, to overcome struggling to pay her bills as a seasonally employed, single woman. Brandy is pursuing her dream of becoming a Physical Therapy Assistant at West Shore Community College, as part of the Michigan Reconnect Program.



LIZZETTE TREJO FUTURE NURSE

"I come from a family in which no one has ever attended College. Both my parents only have a 6th grade education, so my dad always insisted that an education was the best investment we could make in ourselves. Never in my lifetime could I have gotten a better opportunity to go to school because college is expensive and with a family, I just couldn't fit it in my budget," states Lizzette Trejo. A married mother of 4, Lizzette works for District Health Department #10 and was profoundly impacted by the demands on her organization over the past 18 months. Lizzette is making her dreams come true to become a nurse by attending WSCC, as part of the Futures for Frontliners program.





We delivered books EVERYWHERE!

Since its creation in 2016, as a Foundation leadership initiative, Read early. Read often. (RERO) has been working hard to make children's books and early literacy resources accessible and equitable across the county. Research has shown that providing books and educational activities to the families of young children can set the stage for ongoing academic success and degree/credential attainment. **In the past five years, RERO has grown and flourished, providing over 36,000 books to Oceana kids!**

Started with the goal of building home libraries of families with children ages 0 to 5, RERO has expanded to support older children as well during COVID disruptions in education delivery. Along with our nonprofit partners, RERO came up with new and fun ways to give books to families. Early Head Start distributed books along with care packets that were left on families' doorsteps and over a dozen county-wide Little Free Libraries were continuously stocked. Through a collaboration with Love, Inc., RERO was able to provide students with almost 2,500 books! The project added books to activity packs given out alongside our school district's food distribution programs and included books for students of all ages.



2020-2021 YAC Board

Youth GIVING BACK

With students from all area high schools, the Youth Advisory Council (YAC) connects over 40 student leaders together to support their peers via an annual grant budget of \$30,000. **Since inception, the Foundation-led program has made over 532 grants to local youth projects – totaling over \$528,000!**

Each year, YAC also facilitates a Teacher Mini-Grant program for fun and innovative classroom projects. New this year, in response to educator feedback, TMG apps are available once a year, in August. This allows teachers to apply while they're planning for the year and awards are made available in September. With support from



YAC members painting picnic tables at Gayle's Pond county park and planting trees along the Hart-Montague bike trail

the Youth Fund and other advised funds, the recent TMG round funded \$6,600 in requests! "By connecting teachers to community support, we can say thanks to our educators for their tremendous impact in Oceana," said Program Officer and YAC Advisor Danielle Siegel. In addition to their grantmaking, YAC members conduct a needs assessment of middle- and high-school students every three years. In 2019, students reported a greater need for mental health support and coping skills. Other recent YAC activities have included visiting local nonprofits, planting trees along the Hart-Montague bike trail, painting picnic tables in Oceana County parks, helping with a book drive and free book distributions, and more!

GIVE TODAY or Leave a Gift for Tomorrow

The Community Foundation for Oceana County

leads the philanthropic environment of the area, inspiring contributions from donors, delivering exceptional service and being an active participant in seeking solutions to real-life problems. We work to create a place whereby our citizens live and thrive in a vibrant community with abundant resources. We are home to over 180 funds. You can give today, or plan to leave a gift in the future, in any amount, to any of our existing funds. Or, with a gift of \$5,000 (\$10,000 for scholarships), you can start a named fund of your own. We'll be happy to help you choose the option that's best for you. Refer to our website under GIVE tab for more information or give us a call to discuss your charitable goals.

UNRESTRICTED

Addresses the opportunities and challenges within Oceana. As the community changes, so will the projects that your fund supports. These powerful funds allow the Foundation to respond swiftly to critical needs and provide leadership to community initiatives.

Robert & Rose Haase Fund
Julie & John Stivers Fund
Community Investment Fund

DONOR ADVISED

Convenient, flexible tools for individuals, families, businesses, or groups that want to be actively involved in suggesting where community investments are made. Non-endowed above \$5,000 minimum to establish fund – put your philanthropy to work right away.

Dave & Kim Beckman Family Fund
Bob & Wilma Beckman Love Your Neighbor Fund
Bluhm-Lockwood Memorial Fund
Robin Bradley Memorial Fund
Jessica Lauren Bruce Fund for Bipolar Research
Cancer and Critical Care Fund
Carnes Family Interlochen Center for the Arts Fund
Claycomb Family Memorial Fund
Elaine & Lee Curtis Fund
Electric Forest Charitable Fund
Janie Denman Legacy Fund
Wayne Elhart Be Nice Memorial Fund - Oceana
Henry & Dorothy V. Fischer Family Fund
Marge & Doug Gregg Fund
Happy Farmers Art of Living Fund
William Field Hart-Montague Trail Fund
Todd & Kellie Fox Family Fund
Jim Frank Memorial Fund
Hart Rotary Club Fund
Curtiss & Elizabeth Helgren Charitable Fund
Dr. James R. Hines Shelby Community Improvement Rotary Club Fund
Kimmel Family Fund
Edward and Evelyn Kolbe Fund
LaBarge-Beeber Family Fund
Lake-Osceola State Bank Fund
William R. Lathers Foundation
David P. Markiewicz Memorial Fund
Gerald and Florence Meyers Fund
Miller Charitable Fund
Dan and Laura Muirhead Fund
Mrs. Mullen's Closet Fund
Col. Joe & Rilla Nameth Fund
Neighbor to Neighbor Fund
Friends of Oceana County Sheriff Office Fund
Ordoobadi Family Fund
Pentwater Service Club Fund
Peterson-Carey Family Fund
Mary Ann Peterson "Grandma Pete" Memorial Fund
Peterson Farms Fund
Raffaelli Family Fund
Ralph's Kids Fund

Mary R. Sanford Memorial Fund
Paul & Ann Schmiedeknecht Camp Fund
Shelby Optimists Club Fund
Shelby Rotary Club Fund
Shelby State Bank Fund
SLSD Jeep Invasion Fund
Sobecki Family Memorial Fund
Zack Snider Agricultural Memorial Fund
Sparks/Ryan Memorial Fund
Patrick Steen Helping Hand Fund
Mark and Jan Trommater Family Fund
James H. and Ann M. VanTassel II Family Fund
Randall and Linda Wagner Family Fund
Richard & Ryan Walsworth Memorial Fund
Warren G. White Memorial Fund
Wilson Family Little Point Sable Fund
Malcolm "Pete" Wood Memorial Fund

DESIGNATED

Supports your favorite causes that made a significant impact on your life – church, school, nonprofit where you volunteered – you continue to support these organizations even when you're gone.

Crystal Valley Care Fund
James J. Farkas St. John's Catholic Church Cemetery Maintenance Fund
George Wilber and Edna Hansen Endowment Fund
Betty L. Johnston Family Fund
William R. Lathers Golden Township Fund
William W. Moyer Flower Creek Cemetery Fund
William W. Moyer Oceana County Historical & Genealogical Society Fund
Oceana County Historical and Genealogical Society Museum Trust Fund
Robert J. Olenendorf Memorial Fund
Pentwater Red Barn Preservation Fund
Roy's Kids Fund
Shelby Area District Library - Paul and Katherine "Kate" Lound Fund
Trinity Lutheran Community Food Pantry
Connie E. Bailey Memorial Fund
John and Kay Vrbanc Fund

ORGANIZATION ENDOWMENT

Typically started by a nonprofit (or a passionate donor/volunteer) to build endowment for their own organization. We manage the endowments of more than 25 Oceana nonprofits, who receive regular grant distributions from their fund, while saving for the future.

COVE Oceana Endowment Fund
Gene and Barb Davidson Pentwater Artisan Learning Center Fund
Elbridge Community Church Endowment Fund
Fountain Hill Center Lakeshore Office Fund
Habitat for Humanity - Oceana County Fund
Harbor House of Hart Fund
Hart Area Public Library Fund
Hart Community Performing Arts Association Fund
Hesperia Community Library Endowment Fund
Oceana Hispanic Center Fund

Lakeshore Community Hospital Endowment Fund
LASSI Fund
Love INC of Oceana County Fund
New Era Christian School Educational Support Services Fund
New Era Christian School Endowment Fund
Oceana County Council on Aging
Oceana County Historical & Genealogical Society
Oceana County Medical Care Facility Fund
Oceana Christian School Education Fund
OCEANA'S HOME Partnership/Channel Housing Ministries Fund
Pentwater Township Library Fund
Pentwater Historical Society Fund
Shelby Area District Library - Caroline "Kelly" Hansen Morse Memorial Fund
St. Michael School, Brunswick, Education Fund
Trinity Lutheran Church Endowment Fund
United Way of the Lakeshore Oceana County Fund

FIELD OF INTEREST

Supports any broad areas of interest you choose (arts, education, youth, community beautification etc.). Tell us what aspects of the community you care most about, and we'll make grants from your fund to advance work being done in that field.

Little Point Sable - Arts for Oceana County Fund
Child Neglect and Abuse Prevention Fund
Bessie E. & Ethan Allen Gray Health Fund
R.P. & M.J. Henry Family Fund
Homeless Prevention Endowment Fund
Eugene Kuhne Fund
Nobles Family Medical Reserve Corps Fund
Oceana College Access Sustainability Fund
Oceana County Parks & Trails Fund
Oceana Youth Fund
Urgent Needs Fund

COMMUNITY PROJECT

Created by groups who partner with us for help with administration of a specific program, capital campaign, or community project (non-endowed).

Capacity Building Fund
Getty Park Renovation Fund
Oceana Can! Operating Fund
Oceana Conservation District Land Acquisition Fund
Oceana County Fair Grandstand & Fairgrounds Renovation Fund
Oceana Read Early, Read Often Fund
Pentwater Beautification Fund
Protect Pentwater Harbor Campaign Services Fund
Pentwater-Hart Bike Trail Fund
Pentwater Historical Society Building Expansion Fund
Shelby Township Community Park Fund

OPERATING

Supports and sustains the work of the Foundation and leadership activities

Oceana Foundation Administrative Fund
Oceana County Community Foundation

SCHOLARSHIP

Help support students continuing their education, earning a credential or adult learners returning to education. Establish guidelines for eligibility, or you can leave it to us to determine where your award will fill the greatest community need and make the most impact.

Oceana Aviators Scholarship Fund
 Steve Boutell Memorial Scholarship Fund
 Boy Scout Camp Fund
 Robin Bradley Memorial Scholarship Fund
 John Bush III Memorial Scholarship Fund
 Emily Dykstra & Aunt Catherine Lound Scholarship Fund
 Complete Your Degree Program
 Jordan Evans Memorial Scholarship Fund
 Ruth & Frans Feuerstein Scholarship Fund
 Melissa S. Fralic Scholarship Fund
 Robert J. Gebhart Memorial Scholarship Fund
 Gerald "Bud" & Judy Greiner Agricultural Scholarship Fund
 Hager-Lacey Memorial Scholarship Fund
 Collin Hansen Skilled Trades Scholarship Fund
 Hart Public Schools Foundation Scholarship Fund
 Hart Rotary Club Scholarship Fund
 Hart Lions Memorial Scholarship Fund
 Hart Public Schools Robert E. Diman Educational Fund
 Helen Hutt Scholarship Fund
 Edwin Johnson Memorial Scholarship Fund
 Kirk Music & Education Fund
 Michael W. Malburg Sr. Memorial Scholarship
 Gerald L. Malburg Scholarship Fund
 Oceana/Mason MSU Alumni Scholarship Fund
 Clarence Metzler Memorial Hart Band Scholarship
 Ruth Jean Oomen Nursing Scholarship
 Dean Patrick Scholarship Fund
 Pentwater Public Schools
 Ryan Scott Prudhomme Memorial Scholarship
 Terry & Pam Roach Cancer Survivor Scholarship Fund
 Lucas Rosalez Memorial Scholarship Fund
 Joan & David Roseman Medical Scholarship Fund
 Christopher Schaner Memorial Scholarship Fund
 Thomas Schaner Memorial Scholarship Fund
 Shelby Public Schools Foundation Scholarship Fund
 Shelby Rotary Scholarship Fund,
 Sikkenga, Kessler, Thielman
 Shelby Area Chamber of Commerce
 Scholarship Fund
 Mereta Ann Spitler Scholarship Fund
 Seth J. Spitler & Margaret Schaner Spitler
 Scholarship Fund
 Bert Stevens Memorial Scholarship Fund
 Richard and Carole Tompkins Scholarship Fund
 Lisa Veltman Scholarship Fund
 Walkerville Public Schools Fund
 Joseph P. Warmbier Scholarship Fund
 Janet A. Wessel Scholarship Fund
 US Marine Brett Witteveen Memorial Scholarship Fund

BUILD A FUND

Any of these funds can begin as a Build A Fund with the goal of reaching the fund minimum within a few years. Once the balance is met, we'll work with you to convert the fund into the type you desire, and grantmaking can begin.

Flora, Fauna & Friends Build a Fund
 Ladder Community Center Build a Fund
 Lake Michigan Camp Harvey Weaver Preservation Build a Fund
 Colleen Plummer Acts of Kindness Build a Fund
 Allan E. & Betty J. Seyfred Family Build a Fund

Leave a Legacy

The Legacy Society recognizes individuals and couples who have named the Community Foundation for Oceana County as the beneficiary of any type of planned or deferred gift. We are pleased to publicly recognize the people who are planning gifts. Please consider letting us know your intent so we can add your name to our Legacy Society display, website and annual report. Public awareness of your generous action might encourage a friend or neighbor to do so as well.

Our Legacy Society Members are listed below. Consider joining them today!

LEGACY SOCIETY MEMBERS

Anonymous (5)
 Roger & Karen Kirk
 Valerie Nelsen
 Anthony & Kareen Monton
 Franciscus C. & Ruth A. Feuerstein
 Tammy S. & Sean P. Carey
 Nancy Sterk
 Walter & Karen Urick
 Marge Peterson
 Gerald & Florence Meyers
 Rev. Dr. Richard & Mary Sue Carnes
 Joan Sparks Ryan
 Joan Lound
 Karen Hammann
 Darrell & Mary Lou Huggins
 Cliff & Ellen Prince
 James & Brenda Blamer
 Bluhm-Lockwood Memorial Trust -
 William & Gail Bluhm
 Amy LaBarge & Ronald Beeber
 Lee & Elaine Curtis
 David & Joan Roseman
 Jean E. Russell & Bob Childers
 Robert & Theresa Steen
 Everett E. & Barbara J. Davidson
 Joan & Pete LundBorg
 Richard & Carole Tompkins
 Paul & Joyce Anderson
 Marge & Doug Gregg
 Garry & Julie McKeen
 Peter F. Hiddema
 Bob & Joyce Veltman

Mary J. Smith
 John & Julie Stivers
 David Nobles
 Bob & Marilyn Henry
 Curt & Elizabeth Helgren
 Randall & Linda Wagner
 Jill Seyfred
 Heather & John Riker

BEQUEST GIFTS

Julia Hager
 Eugene Kuhne
 Bessie E. & Dr. Ethan Allen Gray
 Joseph P. Warmbier
 Jesse Gillett
 Helen Hutt
 Clara Stevens
 Rush Esther Shull
 Dr. John J. & Kay J. Vrbanac
 Robert E. Diman
 George Wilber & Edna Mae Hansen
 William R. Lathers
 Vern & Florence Martin
 Sheila M. O'Brien
 James J. Farkas
 Robert & Rose Haase
 Dr. Janet Wessel
 William W. Moyer
 Mereta Spitler



COMMUNITY FOUNDATION FOR OCEANA COUNTY

PO Box 902, 388 S Hancock St.

Pentwater, MI 49449



community foundationSM

Oceana County

COMPLETE YOUR DEGREE

Every year, we award over **\$240,000** in new and renewed scholarships to students from Oceana County. Scholarships – created by many generous donors – support students through various paths to post-secondary education including degree programs, apprenticeships, skilled trades training, and certificate programs. By making higher education more accessible for hundreds of area students and adult learners, we create hope and opportunity for all and help strengthen the future of our community.

The Foundation's board began an in-depth look at our scholarship program's impact in 2019, including how to support adult learners. The Complete Your Degree (CYD) program, pioneered by St. Clair Community Foundation, is a way to redefine and reimagine how scholarship assets are used to support the continuing education of adults. Our goal is to help local adults achieve their degrees and credentials to increase their household prosperity, while fostering a more vibrant economy and meeting the employment skill gap in Oceana County. "These students are primarily the "working poor" and going back to school is a huge strain where extra expenses cause hardships. We want to turn someday into today's next step", said Foundation board chair Randy Wagner.

In establishing a Complete Your Degree program in Oceana County, five applicants will be accepted into the initial cohort in 2022. CYD will provide competitive needs-based scholarships, which will cover the full cost of tuition at one of our local community colleges. Additional life needs support for childcare, transportation, housing and other needs are included in the program. A success coach, employed by the Foundation, will walk alongside students to provide extra support to ensure CYD students thrive. If you are interested in supporting or learning more about this initiative, refer to our website under the IMPACT tab or give us a call.

Scholarship Program

"I am a mother of 3 children, doing my best and my husband works as well. We live paycheck to paycheck and I would love to not have to struggle anymore. So I want to go back to school for a rewarding career."

"I feel as though the only struggles would be covering costs of books, tuition, or course fees. I do live on my own and work full time to provide for myself and have managed to save but I have recently had a few large bills pop up and have dug into my savings. Luckily I have a reliable car."