

GROWING

 *our community*



community foundation

Oceana County

COMMUNITY FOUNDATION FOR OCEANA COUNTY

FOUNDATION STAFF

Tammy Carey
Chief Executive Officer

Danielle Siegel
Program Assistant

Heather Douglas
AmeriCorps VISTA member

Holli Schlukebir
Intern

BOARD OF TRUSTEES

Randy Wagner
Chair

Garry McKeen
Vice Chair

Rhonda Greiner
Treasurer

Joan LundBorg
Secretary

Jean Russell
Executive Committee Member

John Grant
Executive Committee Member

Eva Berumen

Gene Davidson

Kellie Fox

Gerrit Herrygers

Dr. Scott Karaptian

Emma Kirwin

Joe Klimovitz

Sarah Schlukebir

Julie Stivers

Jon VanderPloeg

Tel: (231) 869-3377

Email: tammy@oceanafoundation.org
danielle@oceanafoundation.org

Address: P.O. Box 902, 388 S. Hancock St.,
Pentwater, MI 49449

Website: oceanafoundation.org

ANNUAL REPORT TEAM

Project Managers & Writers:

*Tammy Carey, Heather Douglas, Holli Schlukebir,
Danielle Siegel, Jon VanderPloeg*

Design: *Lisa Payne Kirker – Fresh Graphic Design Inc.*

Photography: *Joe Klimovitz – JHK Media, various contributors*

Copyediting: *Julie Stivers*

Printer: *Dobb Printing*



Oceana County

The Community Foundation for Oceana County is a 501c-3 nonprofit organization designed to help people create a lasting impact. With over 170 funds established since 1989, we work with donors, nonprofits, businesses, leaders, doers and more to make our county a stronger, healthier, more vibrant place to live. By connecting donors with causes personal to them and responding to ever-changing issues, we are all united around common goals of improvement, positive change and equitable access to resources for everyone to thrive.



4-5

GROWING CAPACITY:
Celebrating 30 Years, Our Independence & Looking Forward

6-7

GROWING IMPACT:
COVID-19 Response & Racial Justice

8-9

GROWING ECONOMY:
Creating Vibrant Communities

10-11

GROWING PARTNERSHIPS:
Working Together

12-13

GROWING OPPORTUNITY:
Striving for Accessible Education for All

14-15

GROWING ENDOWMENT & LEGACY:
List of Funds & Legacy Society Members

16

GROWING FUTURE LEADERS:
Youth Advisory Council



LETTER *to our donors*

Our cover photo is of a local pollinator field. Why are pollinators important? Aside from natural beauty, pollinators are vital to production agriculture. Approximately 30 percent of the food and fiber crops grown throughout the world depend upon pollinators for reproduction. The fruits and seeds from these crop species provide 15 to 30 percent of the foods and beverages consumed by humans.

Like a pollinator, we strive to be the seed to improving lives and communities in Oceana County. Our role can take many shapes – to lead, support, connect, convene, react or advocate. We are committed to be the community partner that is pursuing the community's greatest opportunities and addressing the most critical challenges. Like a pollinator, we are a partner in growing community assets to create the best outcomes for all people.

In this report, you'll read stories where we helped to initiate resident engagement to propel communities toward a shared vision. Or, connected donors to their charitable passions. We reacted and are still responding to a health and economic crisis. We are making investments in educating our youth, fostering equal opportunity for families to improve their livelihoods. And, we eagerly came alongside significant projects developed by another organization or business. But, none of this would be possible without you.

For 30 years you have supported us, helped us to grow and achieve more impact. You led us to this juncture of becoming an independent community foundation in 2020. We are grateful for your partnership and excited to get to work on the next 30!



Randall Wagner BOARD CHAIR

Tammy Carey CEO

Oceana Conservation District's
new Otto Forest Preserve.
Story on page 11

CELEBRATING 30 YEARS, OUR INDEPENDENCE AND

Looking Forward

In 2018 we developed a 3-year strategic plan with a strong focus on Oceana's broad challenges – including poverty, low education attainment, scarcity of skilled workers and housing. As part of that plan, the Board of Directors identified strategies to effect positive community change in the future, expanding our presence and impact. The Board also acknowledged that we had reached a milestone, an asset level of more than \$14 million in 2019, capable of creating an independent foundation. In October 2019, the IRS approved us as an independent nonprofit.

For 30 years, we operated as an affiliate foundation under the Community Foundation for Muskegon County. As of January 1, 2020, we began operations as an independent community foundation and all funds transferred over to us on March 2nd. We are grateful to have reached this 30-year milestone and for the stewardship of the Muskegon Foundation to learn and grow under their leadership. We are also honored to continue to work with all our amazing donor partners to support area nonprofits and the community overall.

The Board thoughtfully built an operational team to move us into the future with strength and expertise. We strive to respond to changing community needs and to be nimble with the right resources for the situation – our leadership, advocacy, or financial support. We invite you to review the historical timeline presented over these four pages and to celebrate our collective accomplishments, and to join us in creating positive change throughout our shared community.



BUILDING OUR TEAM

Tammy Carey, CEO

Tammy has led the Foundation since 2002 and was selected to serve as CEO in January 2020.



Danielle Siegel, Program Assistant

Danielle joined the Foundation as an AmeriCorps/VISTA member in 2017 and was selected to serve as Program Assistant in January 2020.



Foundation Office

To support our growth during our transition to an independent foundation, Shelby State Bank graciously made the 2nd floor of their Pentwater branch available in January 2019, enabling the Foundation to add staff workstations, a board room, and use of an existing conference room and private CEO office.



Investment Manager

To maintain consistency in expertise, relationships and goals for our investment portfolio, we selected Vanguard Institutional Advisory Services.



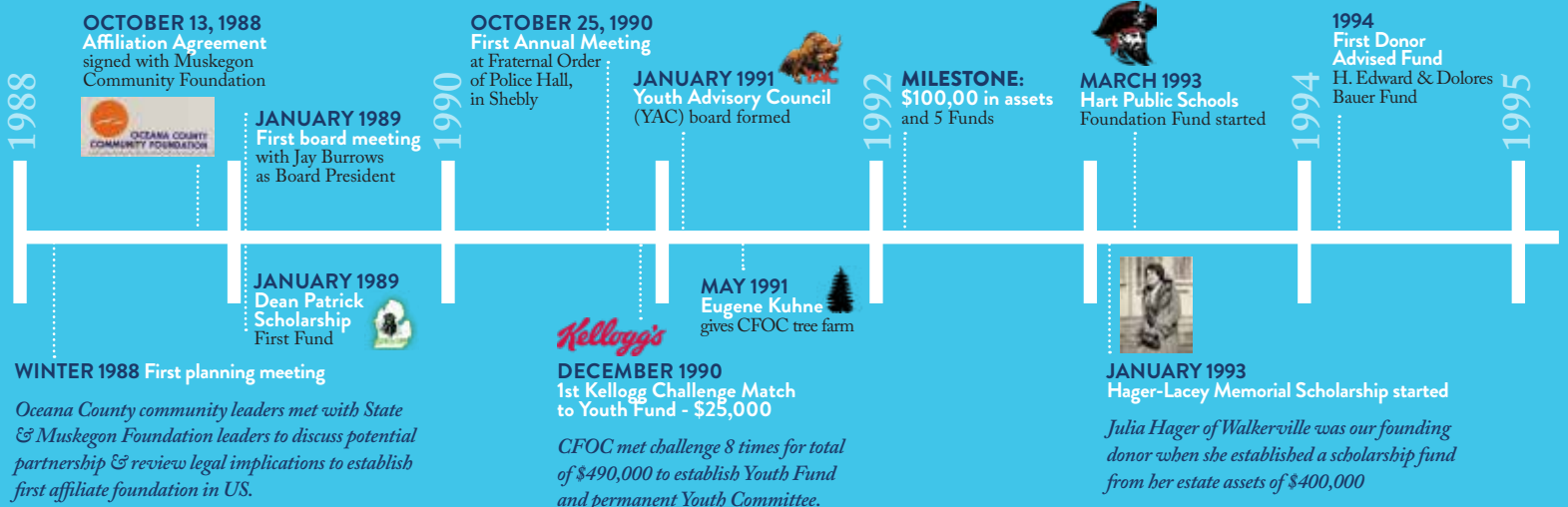
Software

To help us amplify our impact, we selected a comprehensive software solution for community foundations, built on the power and security of Microsoft Dynamics 365 platform.



Accounting

To maximize staff focus on local impact and growth, we selected CHBW to manage our accounting services, based on their experience with community foundations and the AkoyaGo software platform.



2019 by the numbers...

\$1.2
MILLION
IN GIFTS
\$14.1 MILLION
IN TOTAL ASSETS

1091 GIFTS

21.67% ROI

\$693,215
IN GRANTS &
SCHOLARSHIPS
(\$6.9 MILLION SINCE 1989)

12
NEW
FUNDS
(168 TOTAL)

\$181,000
IN BEQUEST
GIFTS

\$110,976
IN IRA
GIFTS

6



W LEGACY
SOCIETY
MEMBERS
L
Z **44** TOTAL

\$50,000

YEAR END CHALLENGE MATCH EXCEEDED

WITH \$53,355 IN GIFTS TO ADMINISTRATIVE
FUND & COMMUNITY INVESTMENT FUND

COMMUNITY LEADERSHIP INITIATIVES



EMPLOYER
RESOURCE NETWORK

ECONOMIC
DEVELOPMENT



Learn more here:

www.oceana-foundation.org/community-impact

LEADERSHIP *Learning Lab*

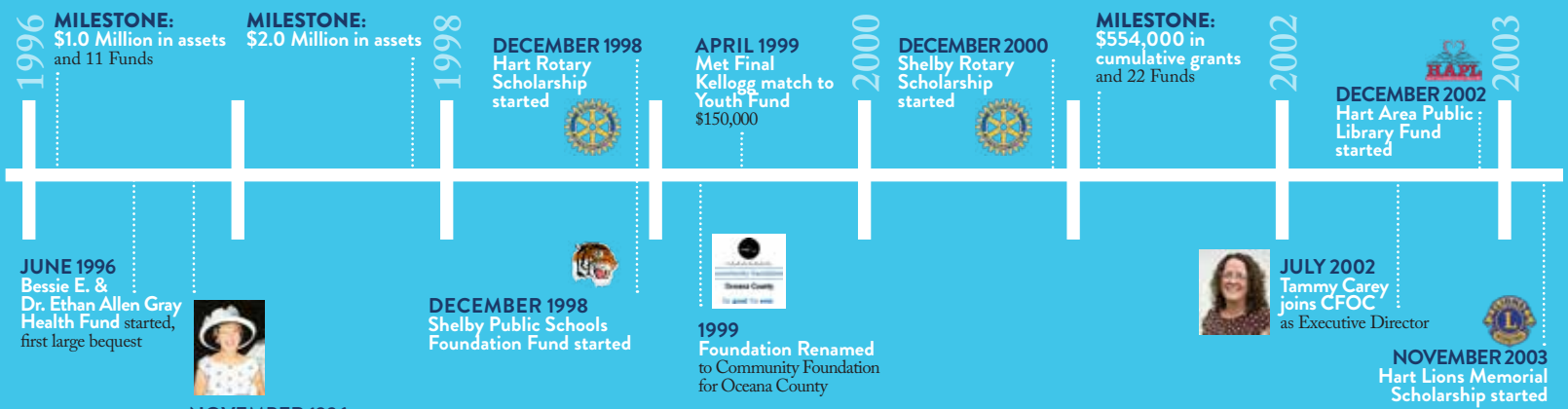
In today's complex world, especially with the service pivots necessitated by the pandemic, the conditions to be successful are constantly shifting, requiring people from all sectors to lead with a new kind of courage and skill. **The Leadership Learning Lab helps leaders to become a more adaptive leader and take time to learn, practice and experiment with new skills acquired in the Lab.** The Lab hosts monthly workshops at five regional sites, with Oceana and Manistee leaders together at the Lakeshore Resource Center in Ludington. The Lab aligns with the Oceana Foundation's strategic efforts to support capacity building among local nonprofits.

The Lab was born out of the collaboration of 11 northern Michigan community foundations that recognized they could do more together than separately, and funders that wanted to invest in a new way of empowering communities. Facilitated by NorthSky Nonprofit Network and Rotary Charities, and funded by the Frey Foundation and the local community foundations, the Lab seeks to connect and empower nonprofit executive directors and emerging leaders and give them the skills to strengthen the organizations and communities they serve.

This three-year program, now in the final year, has supported 17 leaders in a wide range of positions across Oceana County. Providing a trusted space for rising nonprofit leaders to develop their talents and a plan for the impact they wish to make within their local communities is invaluable. The Lab is an investment, planting the seeds of open communication and support between different organizations, not only between the nonprofit leaders, but also amongst the participating foundations. To see a list of previous participants, refer to impact page on website.



Clockwise from top left: **Jodi Nichols** Business Development Coordinator, Oceana County Economic Alliance, **Paul Erickson** President, Oceana County Fair & Oceana County Historical & Genealogical Society, **Sarah Schaner** 4-H Program Coordinator, MSU Extension, **Kortni Garcia**, Public Health Educator, DHD #10, **Danielle Siegel** Program Assistant, CFOC



CFOC HISTORY TIMELINE 1988-2003

Covid-19: WE ENTERED THIS CRISIS TOGETHER AND GREW

In response to the COVID-19 pandemic, Oceana County residents united to help their neighbors in a remarkable collaboration during a time of physical separation. Having never navigated this type of crisis before, our community rose up in ways that should make us all proud, to volunteer, gather needed resources, and help each other. New relationships were born out of the crisis that will forever positively impact our County. Within the Foundation it was a learning moment like none before. To best understand community needs and how we should respond, we surveyed area nonprofits, participated in weekly calls with them, and analyzed 211 help line data. Zoom became our friend and brought a newfound equity in participation and listening. People who had never been in a meeting room together before were now learning about services & resources, sometimes for the first time.

And, donors dug deep during this time of great need to make sure Oceana could take care of its own.

With their help, the Foundation established an Urgent Needs Fund in late March to provide support to area nonprofit organizations, schools and governments on the front lines serving those most impacted by the COVID-19 pandemic. The Fund received initial support of \$40,000 from several Foundation funds, anonymous partners and the Consumers Energy Foundation. Since then, donations have totaled \$95,000. From the beginning our goal was to respond swiftly to basic & emerging needs and be prepared for recovery efforts. We continue to recognize that we are in uncharted waters – the length and depth of our collective hardships are unknown. We do know that our foundation is here for the long haul. That is what community foundations are built for.

Within the first six weeks, we fast-tracked \$28,825 in grants. We've never worked so hard, so fast, joining the ranks of essential workers to help keep our community healthy and safe.

Initially it was all about basic needs – food on the table – making sure that people had access to stocked food pantries. Our first grant was to support five food trucks to serve those residents in more remote parts of the County who have less access to the fixed pantries. Funded

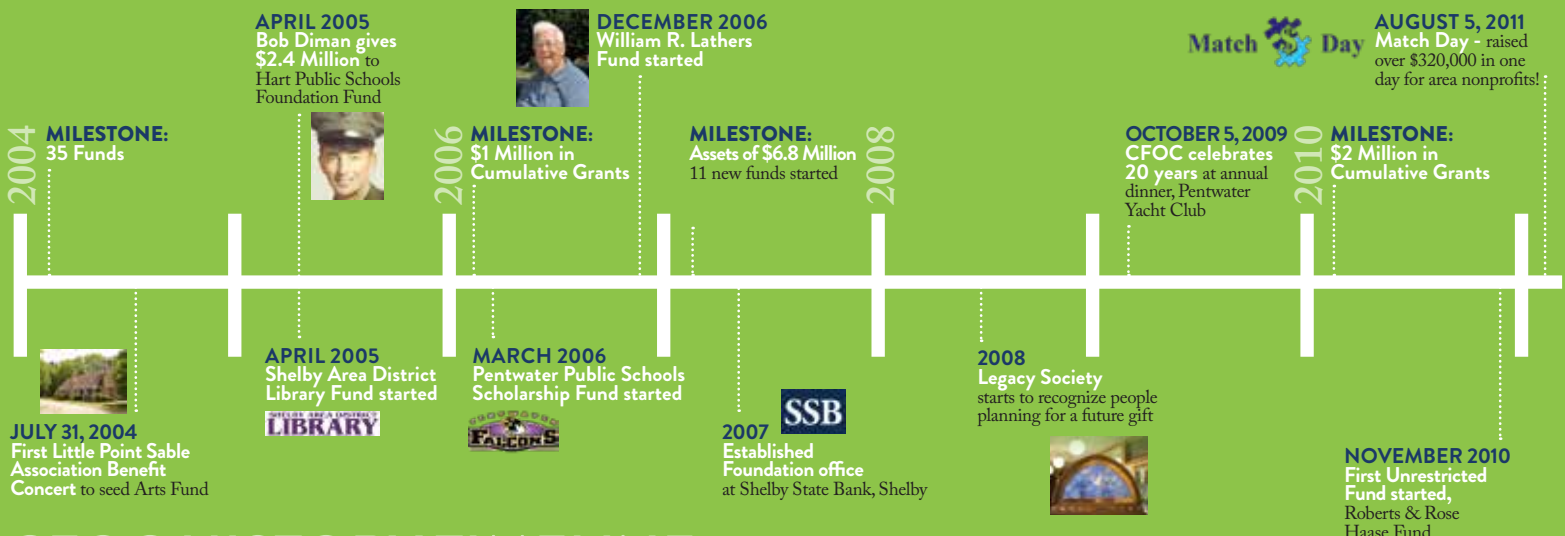
applications continued to mirror pandemic impacts, from mental health services, educational enrichment activities, housing evictions, technology adaptations and PPE needs. As downtown Main Streets shifted to opening in June, the Urgent Needs Fund supported a county-wide “Shop Local” gift card match program to help boost our small town business economy.

What we learned through this time was that equitable delivery of services was critical, especially since health & economic impacts are incurred to a higher degree by marginalized populations. For example, oral health care kits were distributed to all students and many seniors (toothbrush, toothpaste, floss) with instructions about not sharing these items. Hand sanitizer and cleaning products were also given out at the migrant camps, farms and businesses, with educational materials in Spanish, following significant COVID-19 cluster outbreaks. We also learned that a health crisis has significant mental health fall-out that cuts across all populations. Nonprofit partners pivoted services to include well-being checks with disabled persons, socio-emotional supports for children and families, and adapted technology to conduct telehealth sessions during a suicide call.

The Urgent Needs Fund was designed to pool resources with our donor partners to respond, be ready and flexible. Through their generosity, the Foundation has provided a total of \$56,000 via 37 grants, so far, to a variety of local organizations. As nonprofits adjust their services & budgets going into 2021, with fundraising mechanisms curtailed or reduced, the Foundation is assessing how we can help their health too. And, as we work to better understand the long-term impact of this crisis, we will remain in a posture of listening, learning and collaboration with organizations and networks seeking to advance equity through their recovery efforts.

We urge our donors to continue helping our community as the pandemic and its economic effects continue into 2021. To donate, apply for a grant or see all funded requests from the Urgent Needs Fund, visit our website and click on the Impact button.

Oceana County
URGENT NEEDS
Fund



CFOC HISTORY TIMELINE 2004-2019

RACIAL JUSTICE AND

Equity

Author by Trustee Jon VanderPloeg

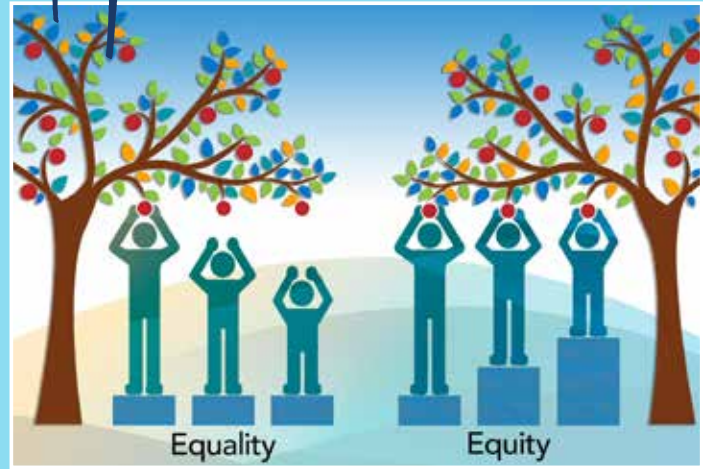
“We all came in on different ships, but we’re all in the same boat now.”

Rev. Martin Luther King, Jr. made that matter-of-fact observation during the Civil Rights Movement of the 60’s. Indeed, the ship that is this nation has a diverse passenger manifest, which is one of the most wonderful attributes of America. With the exception of Native Americans, all of us came from elsewhere, with diverse ideas and beliefs. But all have come together under the words of The Declaration of Independence – that all men are created equal and equally entitled to life, liberty, and happiness. And yet, it took more than 250 years for that belief to apply to all of our citizens, regardless of race.

Slavery existed in America from 1601 until June 19, 1865. President Lincoln’s Gettysburg Address returned to the central statement of the Declaration of Independence rather than to the Constitution, because he recognized the latter had been interpreted to allow slavery. The Constitution was amended by the blood of the civil war. Slavery was abolished. People were now people, regardless of skin color. But Jim Crow laws and the Klan followed for another hundred years. Laws often lead the way, but learned fear and systemic racism are stubborn.

And while “men” was used in our founding documents in the generic sense, meaning both men and women, it did not fully include women. Our most precious political possession in a democracy is the right to vote, and for that vote to be counted. It is baffling to us today that women were denied the right to vote for another 55 years after the abolition of slavery in 1865. Women’s suffrage finally prevailed in 1920. Americans should celebrate that particularly this year, the 100th anniversary of women securing their right to participate in our governance.

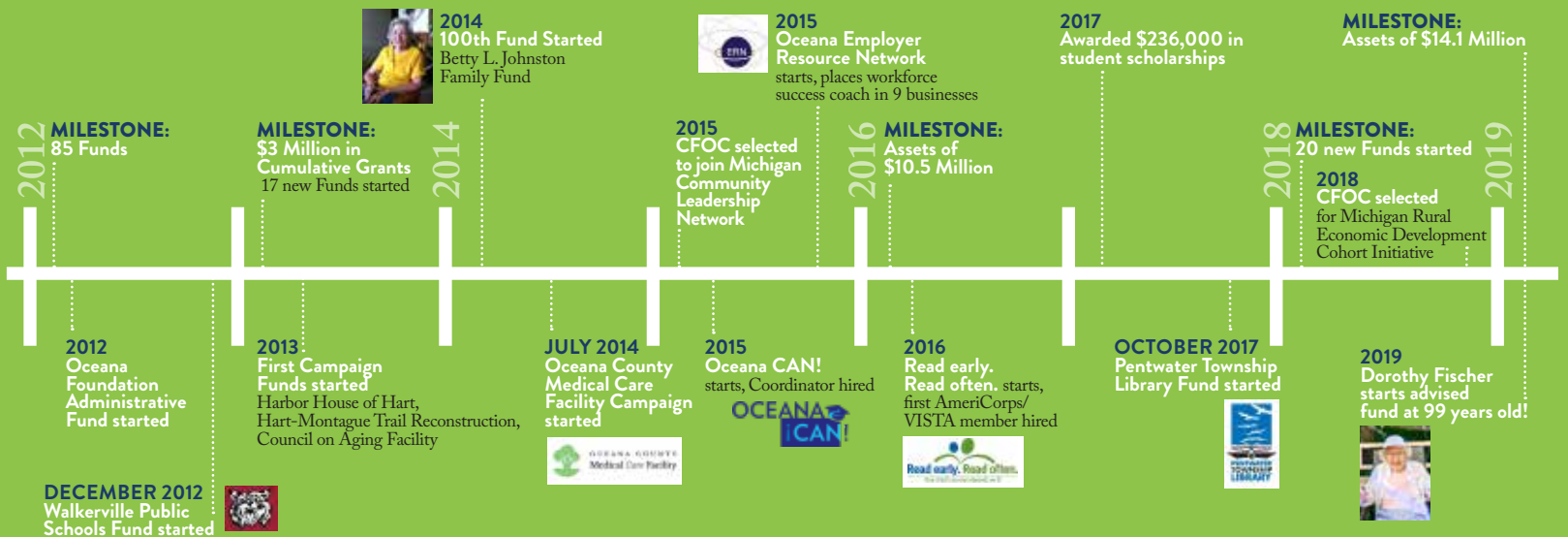
Racial discrimination has had devastating impact on other people of color in this country, including Latinos, Asians, Muslims and Native Americans. The common wrong visited upon all of these people has been a denial of equality, and often, any opportunity at all to partake of the American Dream. And as all of us, and the world, have seen in the graphic



unjustified killings in recent months, discriminatory systems have denied equal justice under the law to large segments of our society. The resulting protests have made progressive demands for justice and equal opportunity. People of all races, creeds, ages, and genders have joined the protests. Rev. King also once said, “The arc of the moral universe is long, but it bends toward justice.” Many are referring to these events as an “inflection point,” meaning that something is bending. If this moment is a further bend in the arc to justice, it must be grasped by people of good will and not allowed to snap back.

The mission & vision of the Community Foundation for Oceana County promote the bend towards justice and equal opportunity. **The Foundation exists to enhance the lives of the people of Oceana County by leading, promoting and channeling philanthropy to connect resources with needs. We envision a community where everyone has access to resources to thrive.**

If you are looking to current events and the bend toward opportunity and justice, and to what you might do to help reach those goals in our community, please look to the Community Foundation for Oceana County. Our board has committed to lead community dialogue around systemic racism to promote understanding, inclusion and equality. We are here to serve everyone in our county.



Vibrant Economies SHELBY ASSESSMENT

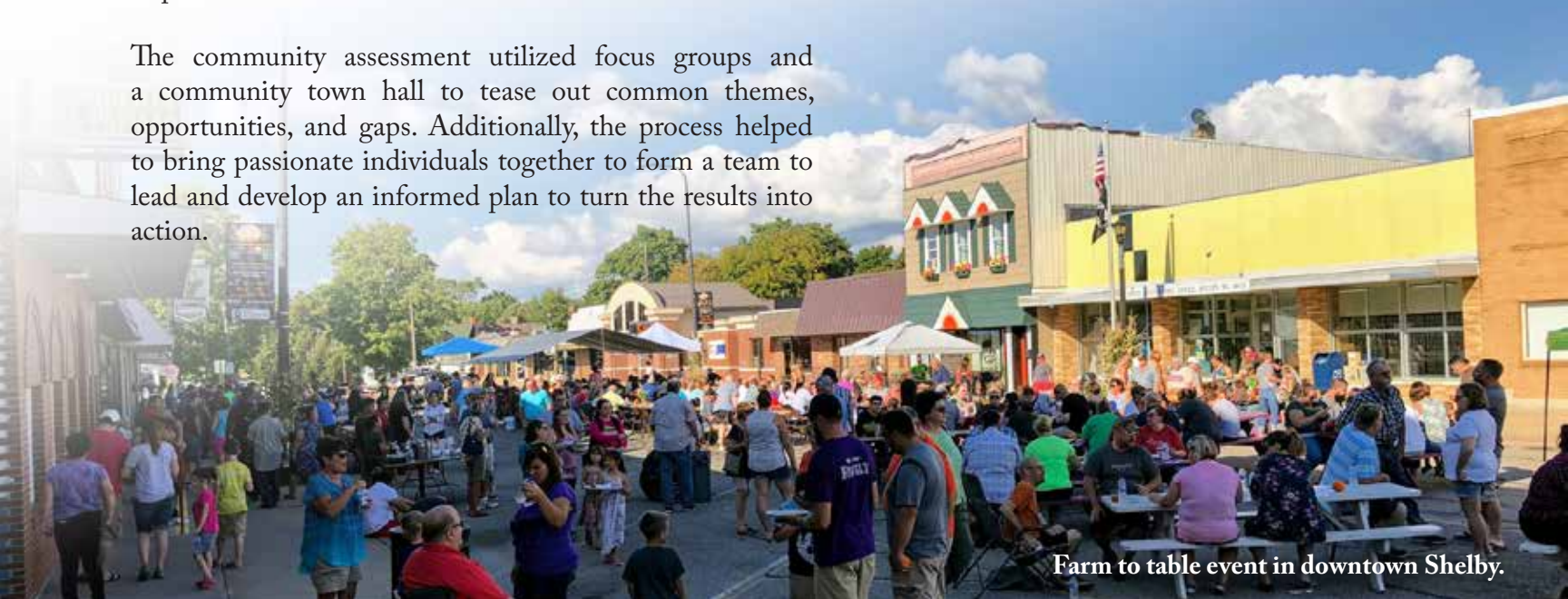
In 2015, the Oceana Community Foundation participated in a Community Leadership Network with eight other Michigan community foundations to gain critical leadership knowledge and practices. We then held our first-ever board retreat, developed a three-year strategic plan and re-imagined our mission and vision. One of the goals in our strategic plan was a needs assessment. Of which type we were unsure: listening tours? county wide assessment? developing a county dashboard? When the opportunity arose to participate in a community foundation cohort to train in economic development activities, we jumped. This cohort was sponsored by the Council of Michigan Foundations and supported by CEDAM (Community Economic Development Association of Michigan) consultants. We wanted to pilot our needs assessment goal and also build relationships, trust and credibility in the area of economic development. Plus, we could bring lessons learned to other communities. We selected the community with the most promise, Shelby, which had a downtown in need of revitalization, but no DDA or Main Street program in place.

The community assessment utilized focus groups and a community town hall to tease out common themes, opportunities, and gaps. Additionally, the process helped to bring passionate individuals together to form a team to lead and develop an informed plan to turn the results into action.

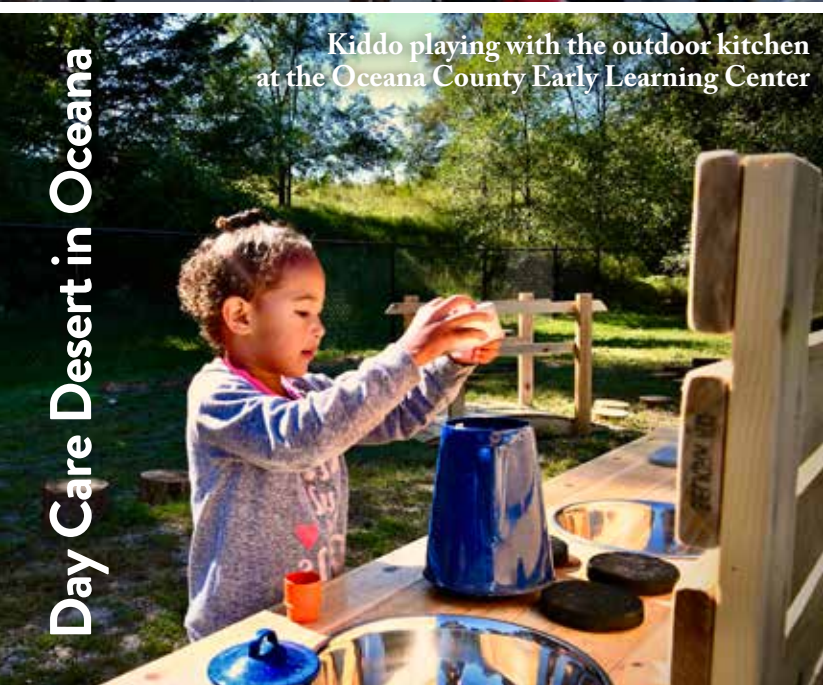
Shelby's assessment revealed 4 top themes:

- A lack of affordable homes
- The desire to beautify the downtown
- The need for a more diverse array of quality jobs
- The lack of inclusivity & cultural appreciation within the Shelby area and representation within local government

By arming government leadership with this feedback, needed blight and rental ordinances were passed. Recently the Village was selected to host a community development fellow to add capacity to move projects forward. The assessment also became a catalyst to host a county housing forum to address the persistent, and growing, housing crisis. Did you know that while 80% of people live in urban areas, rural life is rated as the most desirable? The COVID-19 health pandemic has not only accelerated urban flight, but has found Oceana clearly lacking in housing and internet infrastructure.



Farm to table event in downtown Shelby.



Kiddo playing with the outdoor kitchen at the Oceana County Early Learning Center

According to Oceana County Kids Count Data, in 2019 **53% of three- and four-year-olds were not in preschool and only 1.6% were receiving subsidized care.** The Office of Great Start reports that Oceana County has 28% fewer childcare providers in 2017 than in 2010, making access to childcare very problematic in our rural area. Local businesses consistently cite lack of available, affordable childcare as a significant barrier to both hiring and retaining employees. The Foundation pulled together partners including Great Start Collaborative, United Way of the Lakeshore, Shelby Public Schools, and local businesses including Peterson and Arbre Farms, to discuss this need and identify solutions.



PENTWATER ASSESSMENT

A donor advised grant brought the same CEDAM consultant to conduct a community assessment in Pentwater. A vision team was already in place and the township, village, and school had agreed on collaboration. A multi-layered feedback plan was developed including a summer visitor survey and a community survey.

Six primary themes were identified:

- Lack of attainable housing, with 70% of housing utilized for short-term rentals
- Lack of broadband access, especially problematic for remote workers
- Short retail season, with lack of basic services
- Need for waterfront & recreational use improvements
- Need for infrastructure improvements
- Desire to foster continued collaboration across government units, clubs, various partners

Progress continues with community members invited to carefully vet feedback to build a master plan for Pentwater's future.

Through these assessments we learned that the Foundation was the needed spark to start a grassroots effort to engage residents and reduce project silos by developing shared goals. Our work in this area has been recognized beyond Oceana County. Our CEO was invited to present at a national foundation conference, in a recent Tri-State Webinar, and at several Michigan conferences. Above all, the assessments helped expedite economic development by creating a concise roadmap for government and community leaders, guided by those living in and enjoying these areas. We are excited to identify our next community soon!

In short order Arbre Farms and Peterson Farms took decisive steps to establish two new daycare centers. Arbre Farms took over the on-site Telamon facility to offer a community daycare in Walkerville. A \$3,000 grant from the Foundation's Youth Fund provided support for a consultant to develop their program, including the licensing process, employee training, and equipment costs.

Peterson Farms devoted significant resources to purchase and renovate a building and entered into a unique private-public partnership with Shelby Public Schools to operate the facility. Together, they engineered the Oceana County Early Learning Center, a pre-kindergarten program for children under the age of four including rooms for both



West Michigan Research Station under construction

WEST MICHIGAN RESEARCH STATION

The Foundation and several donor partners provided the largest competitive grant in our history, \$42,600, to the West Michigan Research Station. **The Foundation board recognized this large-scale project as a critical advancement in Oceana's ag economy.** The Station was brought to life through West Central Michigan Horticultural Research, Inc., a new nonprofit organized to support research and agricultural innovation within the region's unique soil and microclimate diversities, in partnership with MSU Extension. Their diligent efforts resulted in multiple state and regional grants, plus over 80 farmer, business and philanthropic donations towards constructing a large training room, conference room, laboratory/fabrication facilities and several outbuildings. Working with local partners, the Station will explore new techniques and technology in energy sources and agricultural practices, assisting local farmers in improving sustainability and yields. Other residents can access classes and nonprofits can use meeting spaces. A "Young Farmer" program is planned for the agricultural enthusiasts of the future. The Station is anticipated to open in December 2020.

infants and toddlers. Another \$3,000 grant from the Foundation's Youth Advisory Council supported curriculum and the Oceana Women Who Care granted \$15,000 for needed center equipment – from high- chairs, cribs, sensory play tables and sleeping cots to lots of toys! The facility will serve Peterson Farms employees at a discounted rate and will be open to the community.

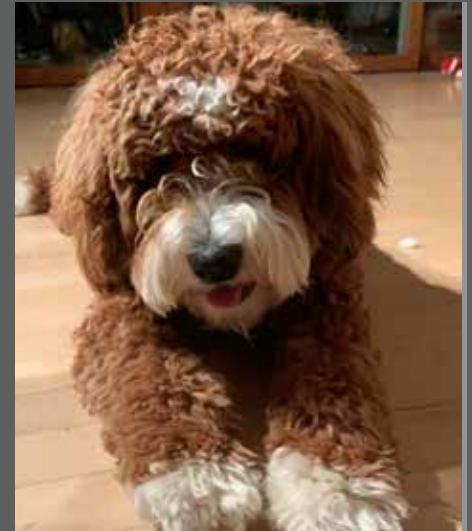
Childcare may not initially be seen as an economic development activity. However, the impacts of these two new centers on the wellbeing of parents and families, school preparedness, and workforce attraction and retention are immense.

PARTNERS IN *Philanthropy*

Creating an Advised Fund takes \$5,000, or the fund minimum can be built up over a period of 5 years, with a starting gift of \$1,000. The Foundation keeps partners in the loop about emerging opportunities, critical needs and what's happening in the community. Annually in the fall, we also survey nonprofits to collate their needs into a community wish list. We also share a grant catalog from our twice annual competitive grant rounds with our donor partners. Many advisor partners enjoy meeting those wishes & grant requests from their Funds.

Pentwater Public Schools, Theo the Service Dog

Pentwater Public School has a new therapy dog, a mini golden doodle, named Theo. Dogs in schools have shown to improve overall climate, support student's academic progress and meet individual student's social and emotional needs through contact and jobs. Students learn how to treat animals, show affection and receive an unconditional affectionate response. Mrs. Mullen's Closet, Nancy Hesting, and Sobeci Family Funds partnered together to award \$2,100 towards therapy dog training. Isn't he the cutest puppy ever?



Shelby Public Schools Thomas Read Playground

When a group of concerned parents and staff expressed interest in updating the play area with age-appropriate, safe & fun equipment for Pre-K to 3rd grade students, the Shelby community swiftly responded. The JT Sackett, Peterson Farms, Youth and Anonymous Funds joined together to provide a combined grant of \$19,500. We had the very best "big check" holders to celebrate the grant!



Exploring the World Virtually

When Walkerville Public Schools requested \$4,000 to purchase a full classroom set of 20 Oculus Virtual Reality glasses the vision was to provide opportunities for students, who seldom get a chance to explore a museum or landmark, to visit the world. Oceana's Women Who Care group fulfilled the request last January and when schools opened back up and class sizes jumped, an additional 10 sets were purchased via an Urgent Needs Fund grant. In this time of social isolation, expanding a student's world is a great fit!

David P Markiewicz Fund – Music to our Ears

After a 2011 car accident tragically took the life of a 24-year-old Shelby High School graduate, his family formed the David P. Markiewicz Memorial Fund to honor David's love for music by raising funds that would support music programs in Oceana County schools. The Fund has purchased equipment, uniforms, and music; and established a band instrument lending program for students who can't afford to purchase or rent them. The goal is to have no barriers to Oceana County students participating in school music programs.



Creating bright futures with STEM learning

Shelby Elementary Schools received \$6,500 in grant funds from the Youth, Little Point Sable-Arts for Oceana County and Peterson Farms Funds for the expansion of the district's STEM program into 3D Printing. Their goal is to use the new 3D printers to create works of art, functional items and to problem solve together on a school or community project. Students also gain experience with Tinker CAD, which is the child version of AutoCAD. STEM units have started discussion topics typically not covered until middle or high school, like finance, sales, design, cost & product constraints. The students are loving all the hands-on opportunities to learn skills for their futures!



Mrs Mullen's Closet Helps Oceana Kiddos

Mrs. Mullen's Closet Fund was set up in memory of Dyanne Mullen, a principal at Hart Public Schools. Dyanne was instrumental in making sure all students in her building had necessary clothing to keep warm and dry. It all began with her buying and stashing coats, gloves and various sizes of clothing in her office closet. Now, the Fund continues to help students in Hart and has expanded to add "closets" at elementary schools in Shelby, Pentwater, New Era and recently in Hesperia. Closet volunteers buy all new coats, snow pants, boots, gloves, mittens, and replacement clothing for accidents & spills to be a resource for school staff to address the immediate needs of a young student.



Helping to Protect Skin & Lives!

Two Pentwater students, Evalena Jeruzal and Aubriana Foster, received grant support from the Terry & Pam Roach Cancer Survivor Fund and the Pentwater Service Club, to install free sunscreen dispensers at Ludington & Mears State Parks for their Girl Scout Silver Award service project. The girls hope this project will help people who forget or can't afford sunscreen to safely enjoy our beautiful beaches and also help prevent the risk of melanoma skin cancer.



Oceana Sheriff's Office's New K-9, Laz

With the recent change to marijuana laws in Michigan, the Oceana County Sheriff's Office needed to add a new K-9 to the department. The current K-9 in the department, Krieger, was trained to alert deputies of unlawful controlled substances, which at the time included marijuana. Once a dog has been trained to search for specific narcotics, it's nearly impossible to remove one substance from the dog's training and understanding. The department received a \$6,500 grant from the Friends of Oceana County Sheriff's Office Fund to purchase "Laz". The Friends Fund contributes to departmental projects, community projects, and equipment for the sheriff's offices that are beyond their annual budget.



Otto Forest Preserve

Richard & Lorayne Otto wanted to donate 80 acres of land in Benona Township and initially approached the Foundation. Since holding land in perpetuity doesn't align with our mission, we were happy to create the bridge between the Ottos and the Oceana Conservation District. We knew this would be the District's first property donation and the start of a new program for receiving and preserving land. With this generous gift from the Ottos and the stewardship of the District, 80 acres of forest will not be cleared or fragmented for development. Instead, the trees will stand tall, and the forest will remain intact, to provide habitat for wildlife, green space for future generations, and a sense of place for those who walk within it.



Women Who Care – Wishmakers for Oceana County

Each fall, the Foundation invites nonprofits to submit a wish list of needs ranging from under \$500 to \$1,500 and above. The Nonprofit Wish Lists provide a range of options for donors to contribute to our community in a meaningful way - a great way to do some charitable Christmas shopping! Last December, the Women Who Care members decided to give their combined donation of \$15,000 to fulfill 10 wishes off the lists, from helping to feed seniors, provide counseling services to people in need, equipment for a community recreation room, environmental education kits to an AED unit.



Education :The Pathway for our Future

DAVID BARRANCO CALIXTO, FUTURE FINANCE OFFICER

"I have many reasons for which I want to succeed in college and receiving this scholarship has given me one more reason," shared David Barranco Calixto, a 2020 recipient of the Peterson Farms Scholarship and top graduate of Shelby High School. His dedication to his studies is motivated by learning English in the 7th grade and fueled by his desire to help others. He is attending Ferris State University to study mathematics or finance.

The Peterson Farms Scholarship helps multiple graduates from Hart & Shelby High Schools each year to achieve their goal of higher education.



DAVID KNOBEL, FUTURE LINEMAN

"My Construction Trades teacher introduced me to countless careers in the field but directed my attention to the lineman field after I told him that I liked doing electrical wiring. He introduced me to area linemen and shared practical life advice with me," said David Knobel, a 2020 recipient of the Joseph Paul Warmbier Scholarship and graduate of Hart High School. He is attending Alpena Community College's lineman program.

Joseph Warmbier worked in the plastering trade. While only completing school through the sixth grade, he wanted his estate to help students achieve skilled trades careers.



TRISTAN LANDIS, FUTURE LINEMAN

"I received your scholarship and you don't know how thankful I am – you're helping my dream come true," shared Tristan Landis, a 2020 recipient of the Collin Hansen Skilled Trades Scholarship. Tristan discovered his passion for hands-on work while attending vocational classes during high school. Following graduation, Tristan worked a gap year and is now attending Northwestern Lineman College in Idaho towards certification in the Power Delivery Industry.

Like Tristan, Collin found his passion for hands-on work (welding) while in high school. Collin's parents created the memorial scholarship to honor his life and passion and to support local residents in learning skilled trades and helping to keep communities running.



ANGELA ORTIZ, FUTURE NONPROFIT LEADER

"Both my parents moved here from Mexico to make sure our family had the best opportunities to have a successful life. They pushed education for all five of their children. The greatest experience I had was to go with a local team to complete a building project in Honduras," shared Angela, a 2020 recipient of the Shelby Rotary Club Scholarship and Shelby High School graduate.

This service experience influenced Angela to concentrate her studies around nonprofit work. Recipients of this scholarship, like Angela, show achievement in the Rotary motto: "Service Above Self."



MINDY PIPPIN-HAGSTROM, FUTURE PHYSICAL THERAPY ASSISTANT

"Aided by your generosity, I will achieve my dream of going back to school to help others improve their quality of life," said Mindy Pippin-Hagstrom, a 2020 recipient of the Robin Bradley Memorial Scholarship. While passionate about fitness and relief from chronic pain, Mindy also wants to impact clients' overall wellness. She is attending Baker College, as a student in their physical therapy assistant program.

Robin worked in the medical field and earned multiple degrees as a lifelong learner. Scholarships aid graduating seniors interested in medical careers and women returning to education, in partnership with the Oceana Women Who Care.



Supporting education is an investment in the future. The Foundation has committed to two initiatives essential to support our already vigorous scholarship programs.

Read early. Read often. helps launch our youngest learners into school.



Oceana CAN! helps launch high school graduates into colleges and careers.

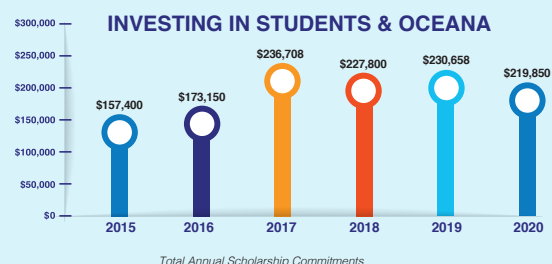


The Foundation acts as the fiscal partner and provides important leadership capabilities to both programs.

Scholarships created by many generous donors are awarded to support students through various paths to post-secondary education, including degree programs, apprenticeships, skilled trades training and certificate programs. By making higher education more accessible for hundreds of area students and adult learners, we create hope and opportunity for all and help strengthen the future of our communities.

TOTAL 2019 INVESTMENTS IN STUDENTS
\$219,850

SCHOLARSHIPS AWARDED **202** STUDENTS RECEIVING AWARDS **138** FIRST GENERATION APPLICANTS **40%**





(College Access Network)

Eight years ago, the Foundation coordinated local stakeholders to address the educational issues that are an intrinsic part of living in a poor, rural county. Graduation rates are low. Young adults do not pursue post-secondary education, including college or certification. Employers cannot find qualified applicants for open positions and unemployment rates are higher than the state average.

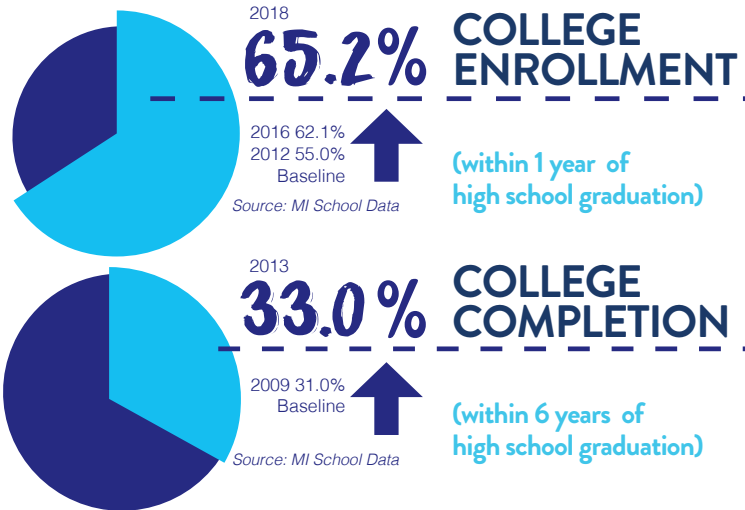


ALYSSA MERTEN, OCAN Coordinator



Area students explore construction trades at MICareerQuest event at Ferris State University

Out of their discussions, the Oceana College Access Network (OCAN) was formed and Alyssa Merten, pictured above, was hired as Coordinator. **OCAN is working to ensure all students, including adult learners, are prepared for and have access to post-secondary education and training.** OCAN is building a culture of learning, lowering systemic barriers and increasing family engagement. The Network also has coordinated a set of college access, career exploration and mentoring services for students, especially for disadvantaged and first-generation students. The Foundation acts as the fiscal partner and provides important leadership capabilities.

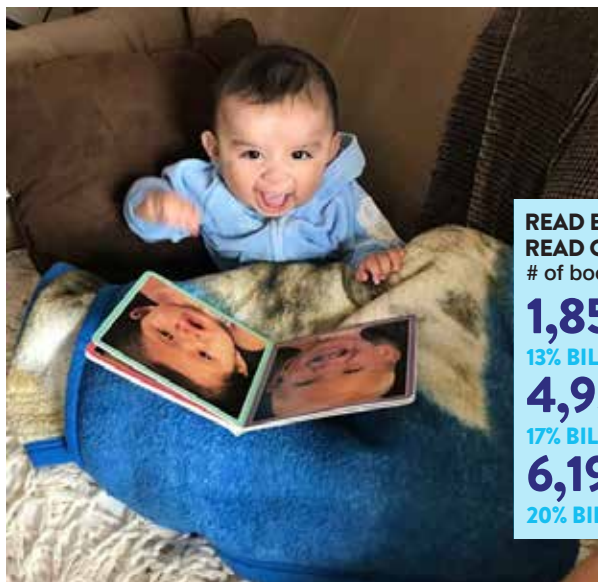
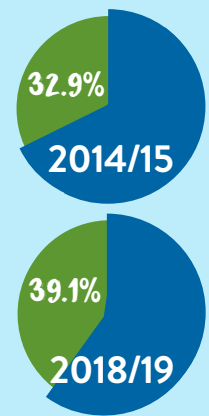


Read early. Read often.

According to Statewide MSTEP testing, Oceana County ranks 81st out of 83 Counties in Michigan in third-grade reading levels.

The Foundation and partners initiated **Read early. Read often.** in 2016 to address this alarming statistic. The goal of the program is to place books into households with young children, while promoting the importance of early literacy.

PERCENTAGE OF THIRD GRADERS PROFICIENT IN ENGLISH LANGUAGE ARTS



READ EARLY. READ OFTEN.
of books distributed

1,858	2017
13% BILINGUAL	Sept-Dec
4,958	2018
17% BILINGUAL	
6,194	2019
20% BILINGUAL	

A University of Nevada study determined that the number of books in a child's home has as great an impact on literacy as the education level of one's parents. With the placement of quality children's books into the hands of children and families, RERO hopes to improve early literacy rates, third-grade reading levels, and the future success of our children. Studies show that reading skills at the point of school entry are consistently associated with higher levels of academic performance in later grades.

GIVE TODAY or Leave a Gift for Tomorrow

The Community Foundation for Oceana County

leads the philanthropic environment of the area, inspiring contributions from donors, delivering exceptional service and being an active participant in seeking solutions to real-life problems. We work to create a place whereby our citizens live and thrive in a vibrant community with abundant resources. We are home to over 170 funds. You can give today, or plan to leave a gift in the future, in any amount, to any of our existing funds. Or, with a gift of \$5,000 (\$10,000 for scholarships), you can start a named fund of your own. We'll be happy to help you choose the option that's best for you. Refer to our website under GIVE tab for more information or give us a call to discuss your charitable goals.

UNRESTRICTED

Addresses the opportunities and challenges within Oceana. As the community changes, so will the projects that your fund supports. These powerful funds allow the Foundation to respond swiftly to critical needs and provide leadership to community initiatives.

Robert & Rose Haase Fund
Community Investment Fund

DONOR ADVISED

Convenient, flexible tools for individuals, families, businesses, or groups that want to be actively involved in suggesting where community investments are made. Non-endowed above \$5,000 minimum to establish fund – put your philanthropy to work right away.

Dave & Kim Beckman Family Fund
Bob & Wilma Beckman Love Your Neighbor Fund
Bluhm-Lockwood Memorial Fund
Robin Bradley Memorial Fund
Jessica Lauren Bruce Fund for Bipolar Research
Cancer and Critical Care Fund
Carnes Family Fund
Claycomb Family Memorial Fund
Electric Forest Charitable Fund
Wayne Elhart Be Nice Memorial Fund - Oceana
Henry & Dorothy V. Fischer Family Fund
Marge & Doug Gregg Fund
Happy Farmers Art of Living Fund
William Field Hart-Montague Trail Fund
Hart Rotary Club Fund
Curtiss & Elizabeth Helgren Charitable Fund
Nancy Hesting Fund
Kimmel Family Fund
Edward and Evelyn Kolbe Fund
LaBarge-Beeber Family Fund
Lake-Osceola State Bank Fund
William R. Lathers Foundation
David P. Markiewicz Memorial Fund
Gerald and Florence Meyers Fund
Miller Charitable Fund
Dan and Laura Muirhead Fund
Mrs. Mullen's Closet Fund
Col. Joe & Rilla Nameth Fund
Neighbor to Neighbor Fund
Friends of Oceana County Sheriff Office Fund
Pentwater Service Club Fund
Peterson-Carey Family Fund
Mary Ann Peterson "Grandma Pete" Memorial Fund
Peterson Farms Fund
Raffaelli Family Fund
Ralph's Kids Fund
Mary R. Sanford Memorial Fund
Paul & Ann Schmiedeknecht Camp Fund
Shelby Optimists Club Fund
Shelby Rotary Club Fund
SLSD Jeep Invasion Fund

Sobecki Family Memorial Fund
Zack Snider Agricultural Memorial Fund
Sparks/Ryan Memorial Fund
Patrick Steen Helping Hand Fund
Mark and Jan Trommater Family Fund
James H. and Ann M. VanTassel II Family Fund
Randall and Linda Wagner Family Fund
Richard & Ryan Walsworth Memorial Fund
Warren G. White Memorial Fund
Wilson Family Little Point Sable Fund
Malcolm "Pete" Wood Memorial Fund

DESIGNATED

Supports your favorite causes that made a significant impact on your life – church, school, nonprofit where you volunteered – you continue to support these organizations even when you're gone.

Crystal Valley Care Fund
James J. Farkas St. John's Catholic Church Cemetery Maintenance Fund
George Wilber and Edna Hansen Endowment Fund
Betty L. Johnston Family Fund
William R. Lathers Golden Township Fund
William W. Moyer Flower Creek Cemetery Fund
William W. Moyer Oceana County Historical & Genealogical Society Fund
Oceana County Historical and Genealogical Society Museum Trust Fund
Robert J. Olendorf Memorial Fund
Pentwater Red Barn Preservation Fund
Roy's Kids Fund
Shelby Area District Library - Paul and Katherine "Kate" Lound Fund
Trinity Lutheran Community Food Pantry
Connie E. Bailey Memorial Fund
John and Kay Vrbanac Fund

ORGANIZATION ENDOWMENT

Typically started by a nonprofit (or a passionate donor/volunteer) to build endowment for their own organization. We manage the endowments of more than 25 Oceana nonprofits, who receive regular grant distributions from their fund, while saving for the future.

COVE Oceana Endowment Fund
Gene and Barb Davidson Pentwater Artisan Learning Center Fund
Elbridge Community Church Endowment Fund
Fountain Hill Center Lakeshore Office Fund
Habitat for Humanity - Oceana County Fund
Harbor House of Hart Fund
Hart Area Public Library Fund
Hart Community Performing Arts Association Fund
Hesperia Community Library Endowment Fund
Oceana Hispanic Center Fund
Lakeshore Community Hospital Endowment Fund
LASSI Fund
Love INC of Oceana County Fund
New Era Christian School Educational Support Services Fund

New Era Christian School Endowment Fund
Oceana County Council on Aging
Oceana County Historical & Genealogical Society
Oceana County Medical Care Facility Fund
Oceana Christian School Education Fund
OCEANA'S HOME Partnership/Channel Housing Ministries Fund
Pentwater Township Library Fund
Pentwater Historical Society Fund
Shelby Area District Library-Caroline "Kelly" Hansen Morse Memorial Fund
St. Michael School, Brunswick, Education Fund
Trinity Lutheran Church Endowment Fund
United Way of the Lakeshore Oceana County Fund

FIELD OF INTEREST

Supports any broad areas of interest you chose (arts, education, youth, community beautification etc.). Tell us what aspects of the community you care most about, and we'll make grants from your fund to advance work being done in that field.

Little Point Sable - Arts for Oceana County Fund
Child Neglect and Abuse Prevention Fund
Bessie E. & Ethan Allen Gray Health Fund
R.P. & M.J. Henry Family Fund
Homeless Prevention Endowment Fund
Eugene Kuhne Fund
Nobles Family Medical Reserve Corps Fund
Oceana College Access Sustainability Fund
Oceana County Parks & Trails Fund
Oceana Youth Fund
Urgent Needs Fund

COMMUNITY PROJECT

Created by groups who partner with us for help with administration of a specific program, capital campaign, or community project (non-endowed).

Capacity Building Fund
Getty Park Renovation Fund
Oceana Can! Operating Fund
Oceana County Council on Aging Facility Fund
Oceana County Medical Care Facility Campaign Fund
Oceana Read Early, Read Often Fund
Pentwater Beautification Fund
Protect Pentwater Harbor Campaign Services Fund
Pentwater-Hart Bike Trail Fund
Pentwater-Hart Trail MEDC Grant Fund

OPERATING

Supports and sustains the work of the Foundation and leadership activities

Oceana Foundation Administrative Fund
Oceana County Community Foundation

SCHOLARSHIP

Help support students continuing their education, earning a credential or adult learners returning to education. Establish guidelines for eligibility, or you can leave it to us to determine where your award will fill the greatest community need and make the most impact.

- Oceana Aviators Scholarship Fund
- Steve Boutell Memorial Scholarship Fund
- Boy Scout Camp Fund
- Robin Bradley Memorial Scholarship Fund
- John Bush III Memorial Scholarship Fund
- Emily Dykstra & Aunt Catherine Lound Scholarship Fund
- Jordan Evans Memorial Scholarship Fund
- Ruth & Frans Feuerstein Scholarship Fund
- Melissa S. Fralic Scholarship Fund
- Robert J. Gebhart Memorial Scholarship Fund
- Gerald "Bud" & Judy Greiner Agricultural Scholarship Fund
- Hager-Lacey Memorial Scholarship Fund
- Collin Hansen Skilled Trades Scholarship Fund
- Hart Public Schools Foundation Scholarship Fund
- Hart Rotary Club Scholarship Fund
- Hart Lions Memorial Scholarship Fund
- Hart Public Schools Robert E. Diman Educational Fund
- Helen Hutt Scholarship Fund
- Edwin Johnson Memorial Scholarship Fund
- Kirk Music & Education Fund
- Michael W. Malburg Sr. Memorial Scholarship
- Gerald L. Malburg Scholarship Fund
- Oceana/Mason MSU Alumni Scholarship Fund
- Dean Patrick Scholarship Fund
- Pentwater Public Schools
- Terry & Pam Roach Cancer Survivor Scholarship Fund
- Lucas Rosalez Memorial Scholarship Fund
- Joan & David Roseman Medical Scholarship Fund
- Christopher Schaner Memorial Scholarship Fund
- Thomas Schaner Memorial Scholarship Fund
- Shelby Public Schools Foundation Scholarship Fund
- Shelby Rotary Scholarship Fund, Sikkenga, Kessler, Thielman
- Shelby Area Chamber of Commerce Scholarship Fund
- Mereta Ann Spitler Scholarship Fund
- Seth J. Spitler & Margaret Schaner Spitler Scholarship Fund
- Bert Stevens Memorial Scholarship Fund
- Richard and Carole Tompkins Scholarship Fund
- Lisa Veltman Scholarship Fund
- Walkerville Public Schools Fund
- Joseph P. Warmbier Scholarship Fund
- Janet A. Wessel Scholarship Fund
- US Marine Brett Witteveen Memorial Scholarship Fund

BUILD A FUND

Any of these funds can begin as a Build A Fund with the goal of reaching the fund minimum within a few years. Once the balance is met, we'll work with you to convert the fund into the type you desire, and grantmaking can begin.

- Janie Denman Legacy Build a Fund
- Flora, Fauna & Friends Build a Fund
- Todd & Kellie Fox Family Build a Fund
- Jim Frank Memorial Build a Fund
- Ladder Community Center Build a Fund
- Lake Michigan Camp Harvey Weaver Preservation Build a Fund
- Jack Patterson Memorial Junior Sailing Build a Fund
- Colleen Plummer Acts of Kindness Build a Fund
- Allan E. & Betty J. Seyfred Family Build a Fund

Leave a Legacy

Many of our donors like to leave money to charity in their will or trust. Are there any causes or work that we are doing that you are passionate about? Leaving a gift can be as simple as changing a retirement account beneficiary designation. Or, you can work with an attorney to update your will or trust. We invite you to become a member of our Legacy Society and to be recognized on our display and website.

LEGACY SOCIETY MEMBERS

- Anonymous (5)
- Roger & Karen Kirk
- Valerie Nelsen
- Anthony & Kareen Monton
- Franciscus C. & Ruth A. Feuerstein
- Tammy S. & Sean P. Carey
- Nancy Sterk
- Walter & Karen Urick
- Marge Peterson
- Gerald & Florence Meyers
- Rev. Dr. Richard & Mary Sue Carnes
- Joan Sparks Ryan
- Joan Lound
- Karen Hammann
- Darrell & Mary Lou Huggins
- Cliff & Ellen Prince
- James & Brenda Blamer
- Bluhm-Lockwood Memorial Trust - William & Gail Bluhm
- Amy LaBarge & Ronald Beeber
- Lee & Elaine Curtis
- David & Joan Roseman
- Jean E. Russell & Bob Childers
- Robert & Theresa Steen
- Everett E. & Barbara J. Davidson
- Joan & Pete LundBorg
- Richard & Carole Tompkins
- Paul & Joyce Anderson
- Marge & Doug Gregg
- Garry & Julie McKeen

Peter F. Hiddema

- Bob & Joyce Veltman
- Mary J. Smith
- John & Julie Stivers
- David Nobles
- Bob & Marilyn Henry
- Curt & Elizabeth Helgren
- Randall & Linda Wagner
- Jill Seyfred

BEQUEST GIFTS

- Julia Hager
- Eugene Kuhne
- Bessie E. & Dr. Ethan Allen Gray
- Joseph P. Warmbier
- Jesse Gillett
- Helen Hutt
- Clara Stevens
- Rush Esther Shull
- Dr. John J. & Kay J. Vrbanac
- Robert E. Diman
- George Wilber & Edna Mae Hansen
- William R. Lathers
- Vern & Florence Martin
- Sheila M. O'Brien
- James J. Farkas
- Robert & Rose Haase
- Dr. Janet Wessel
- William W. Moyer
- Mereta Spitler



COMMUNITY FOUNDATION FOR OCEANA COUNTY

PO Box 902, 388 S Hancock St.

Pentwater, MI 49449



community foundationSM

Oceana County



Youth Advisory Council **YAC**

YAC is a youth-led Foundation initiative made up of 40+ Oceana high-schoolers. Members advise on all youth grants, perform service projects and gain leadership skills. Since its creation, YAC has provided over 449 grants, totaling over \$432,000! These young philanthropists also conducted a needs assessment in their middle & high schools in 2019. The top issues were all mental health related: stress from schoolwork, bullying, depression/suicidal thoughts, lack of self-esteem, and behaviors such as vaping use, which is seen as a coping mechanism. YAC members decided to make their priorities for 2020 mental health and positive coping mechanisms for stress which, as it turns out, is needed more than ever with COVID-19 impacts.

Last fall a local caseworker reached out to the Foundation looking for assistance in putting up a fence for a visually impaired mother to keep her and her young son safe while playing in the yard. YAC members enjoyed spending two Sunday afternoons building a fence for them -- creating a functional and safe space. The Bob and Wilma Beckman Love Your Neighbor Fund provided funding for the materials and a local builder volunteered his time and tools to lead the students.



Local child enjoying his new safe play yard



YAC members participated in an environmental education program with the Oceana Conservation District at Gales Pond.



Community Service Spotlight - YAC in action!